

VORTAC BDF	APP CRS	Rwy Idg	4003
114.7	133°	TDZE	564
Chan 94		Apt Elev	585

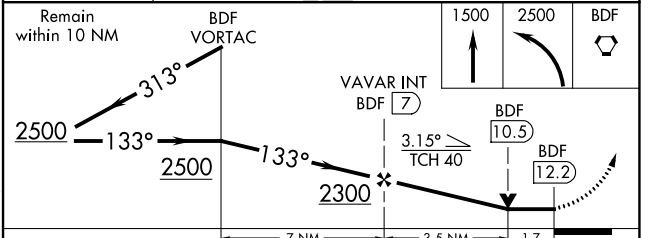
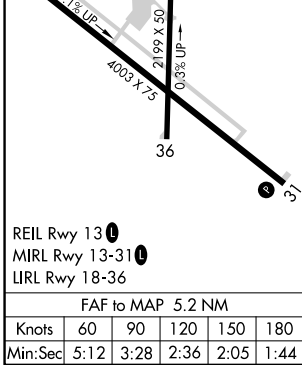
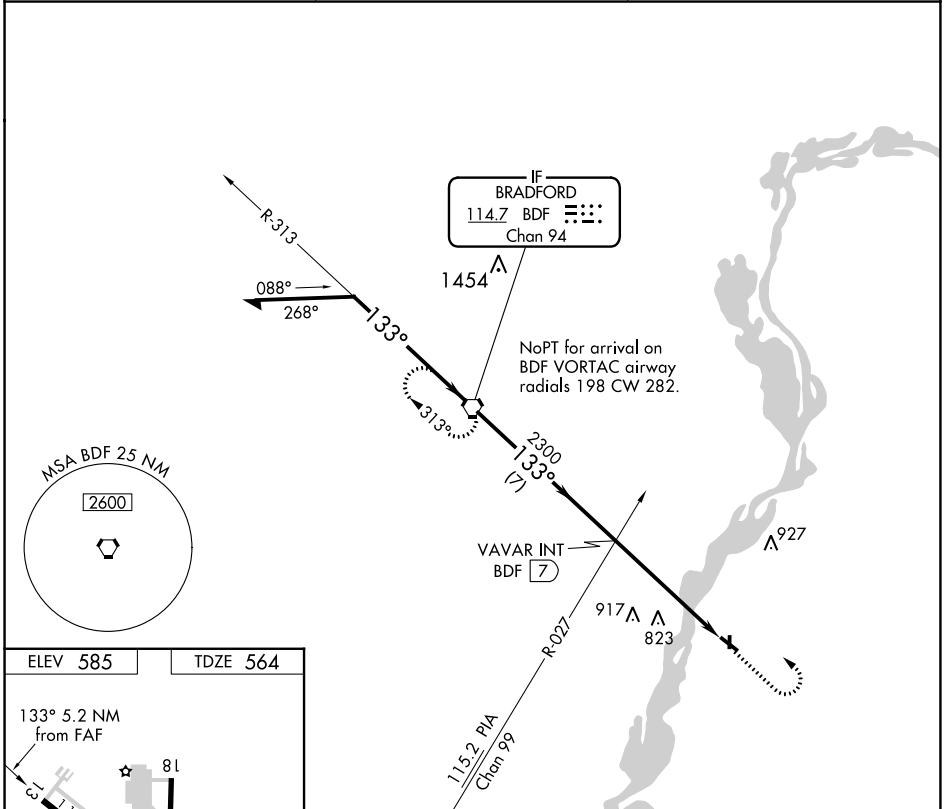
VOR RWY 13

MARSHALL COUNTY (C75)

⚠ Circling to Rwy 31, 36 NA at night.
⚠ Rwy 13 helicopter visibility reduction below ¾ SM NA.

MISSED APPROACH: Climb to 1500, then climbing left turn to 2500 direct BDF VORTAC and hold.

AWOS-3 119.425	CHICAGO CENTER 124.55 307.125	UNICOM 122.8 (CTAF) 0
--------------------------	---	---------------------------------



CATEGORY	A	B	C	D
S-13	1140-1	576 (600-1)	1140-1½ 576 (600-1½)	NA
CIRCLING	1140-1	555 (600-1)	1200-1¾ 615 (700-1¾)	NA

EC-3, 26 DEC 2024 to 23 JAN 2025

EC-3, 26 DEC 2024 to 23 JAN 2025