

WAAS CH 65999 W05A	APP CRS 053°	Rwy Idg TDZE 700 Apt Elev 700	6007
--	------------------------	---	-------------

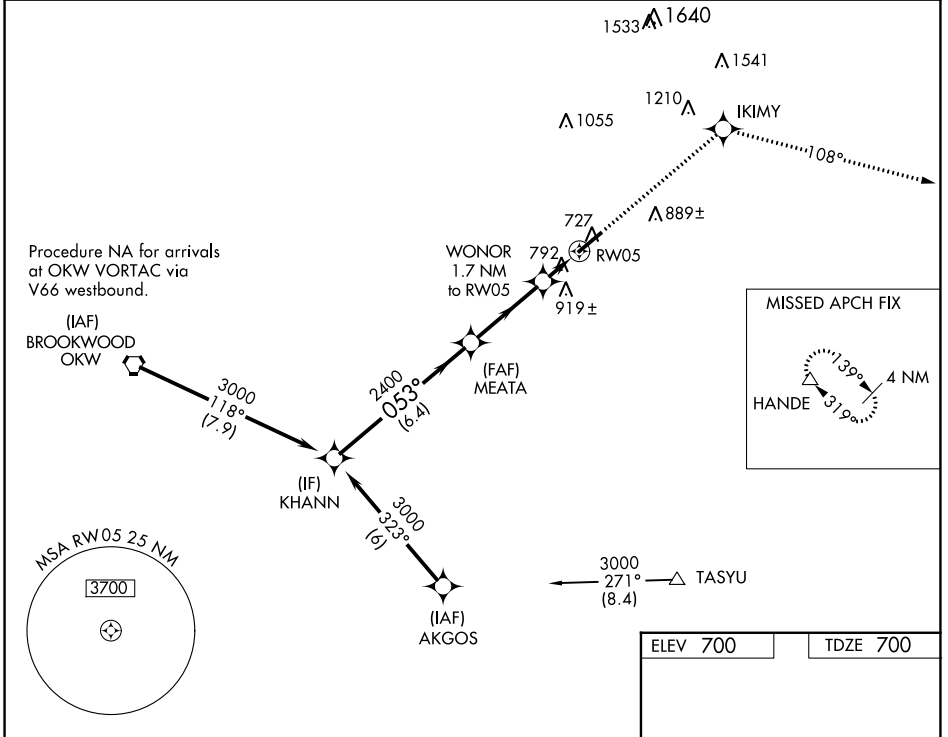
RNAV (GPS) RWY 5

BESSEMER (EKY)

NA Baro-VNAV NA when using Alabaster altimeter setting. For uncompensated Baro-VNAV systems, LNAV/VNAV NA below -16°C (4°F) or above 54°C (130°F). DME/DME RNP-0.3 NA. When local altimeter setting not received, use Alabaster altimeter setting and increase LPV DA to 941 feet, LNAV/VNAV DA to 1285 feet, and all MDAs 60 feet; increase Circling Cat D visibility ¼ SM.

MISSED APPROACH: Climb to 4000 direct IKIMY and on track 108° to HANDE and hold.

AWOS-3PT 118.825	BIRMINGHAM APP CON 124.9 351.85	CLNC DEL 123.75	UNICOM 123.0 (CTAF) 0
----------------------------	---	---------------------------	---------------------------------



SE-4, 26 DEC 2024 to 23 JAN 2025

SE-4, 26 DEC 2024 to 23 JAN 2025

Procedure Turn NA	KHANN	MEATA	IKIMY	HANDE
	3000	2400	4000	4000
	053°	108°	108°	108°
	GP 3.00°	TCH 60	WONOR 1.7 NM to RW05	* LNAV only
	6.4 NM	3.4 NM	1.7 NM	
CATEGORY	A	B	C	D
LPV DA		900-3/4	200 (200-3/4)	
LNAV/VNAV DA		1244-2	544 (600-2)	
LNAV MDA	1160-1	460 (500-1)	1160-1 3/8 460 (500-1 3/8)	1160-1 1/2 460 (500-1 1/2)
CIRCLING	1200-1	500 (500-1)	1220-1 1/2 520 (600-1 1/2)	1320-2 620 (700-2)

