

WAAS CH <b>90424</b> <b>W22A</b>	APP CRS <b>220°</b>	Rwy Idg <b>4401</b> TDZE <b>35</b> Apt Elev <b>35</b>
--	------------------------	---

# RNAV (GPS) RWY 22

CONWAY-HORRY COUNTY (HYW)

RNP APCH.

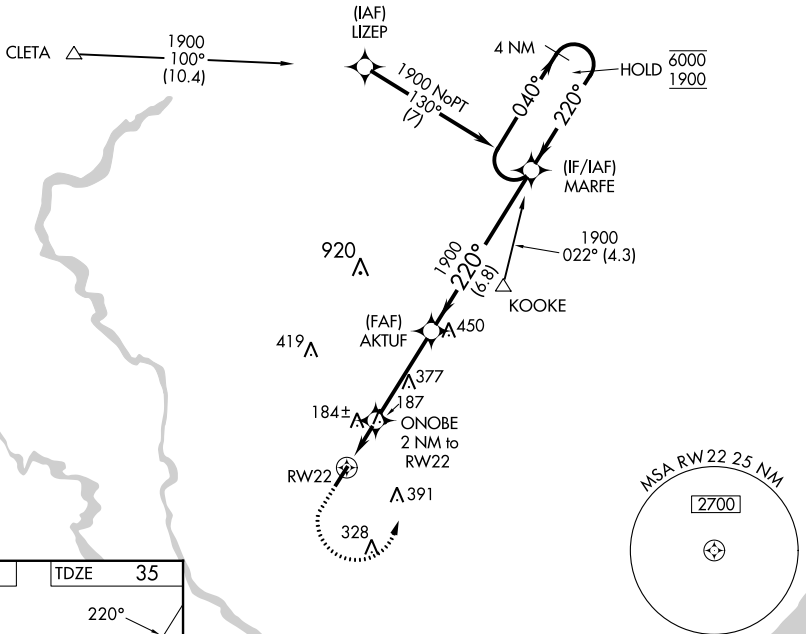
**⚠** Rwy 22 helicopter visibility reduction below 1 SM NA. Straight-in Rwy 22 at night, operational VGSI required, remain on or above VGSI glidepath until threshold. For uncompensated Baro-VNAV systems, LNAV/VNAV NA below -15°C or above 54°C.

MISSED APPROACH: Climb to 500 then climbing left turn to 1900 direct MARFE and hold.

AWOS-3  
**119.525**

MYRTLE BEACH APP CON★  
**127.4 257.95**

UNICOM  
**122.7 (CTAF)**



500	1900	MARFE	VGSI and RNAV glidepath not coincident (VGSI Angle 3.00/TCH 43).	4 NM Holding Pattern
*LNAV only.	ONOBE 2 NM to RW22	1900	AKTUF	MARFE
	700*	1900	220°	040° → 6000 ← 220° 1900
	2 NM	3.7 NM	6.8 NM	GP 3.00° TCH 40
CATEGORY	A	B	C	D
LPV DA	285-1 250 (300-1)			
LNAV/VNAV DA	438-1 <sup>1</sup> / <sub>8</sub> 403 (500-1 <sup>1</sup> / <sub>8</sub> )			
LNAV MDA	440-1	405 (500-1)	440-1 <sup>1</sup> / <sub>8</sub>	405 (500-1 <sup>1</sup> / <sub>8</sub> )
<b>C</b> CIRCLING	520-1 485 (500-1)	540-1 505 (600-1)	700-1 <sup>3</sup> / <sub>4</sub> 665 (700-1 <sup>3</sup> / <sub>4</sub> )	700-2 665 (700-2)

REIL Rws 4 and 22  
MIRL Rwy 4-22

SE-2, 26 DEC 2024 to 23 JAN 2025

SE-2, 26 DEC 2024 to 23 JAN 2025