

RNAV (GPS) RWY 36

SHELBY COUNTY (2H(0))

| | | |
|-------------|----------|-------------|
| APP CRS | Rwy Idg | 4098 |
| 002° | TDZE | 619 |
| | Apt Elev | 619 |

RNP APCH - GPS.

NA Circling NA to Rws 4, 14, 22, and 32. Use Decatur altimeter setting, when not received use Mattoon/Charleston altimeter setting and increase all MDAs 20 feet, and Circling Cat C visibility ¼ SM. Rwy 36 helicopter visibility reduction below 1 SM NA. Straight-in and Circling Rwy 36 NA at night.

MISSED APPROACH:
Climbing left turn to 2400 direct EROXY and hold.

DEC ASOS

126.35

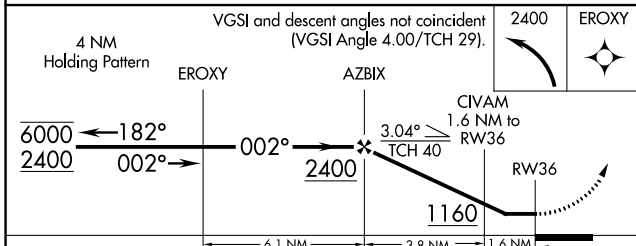
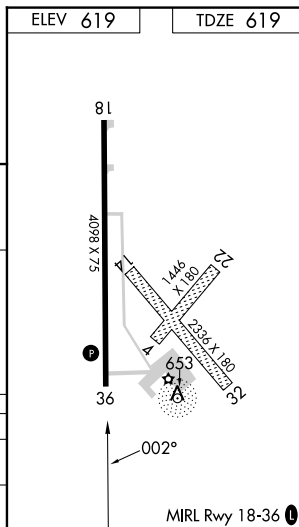
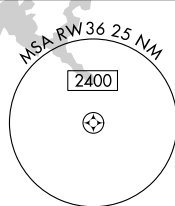
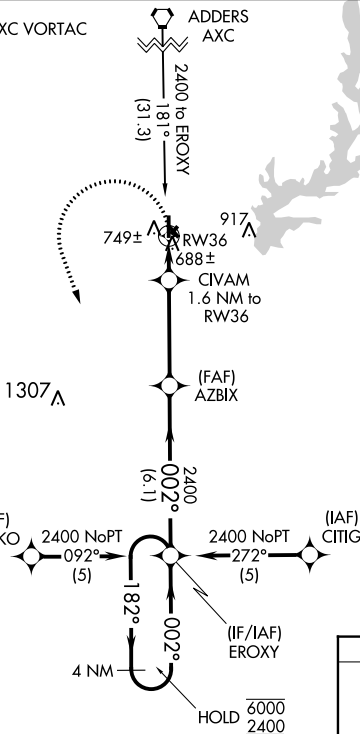
KANSAS CITY CENTER

124.3 269.15

UNICOM

122.8 (CTAF) 0

Procedure NA for arrival on AXC VORTAC airway radials 098 CW 217.



| CATEGORY | A | B | C | D |
|-------------------|--------|-------------|-------------------------------|----|
| LNVA MDA | 1080-1 | 461 (500-1) | 1080-1 3/8 461 (500-1 3/8) | NA |
| C CIRCLING | 1280-1 | 661 (700-1) | 1340-2 721 (800-2) | NA |