

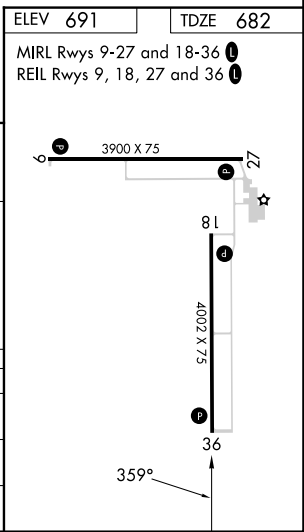
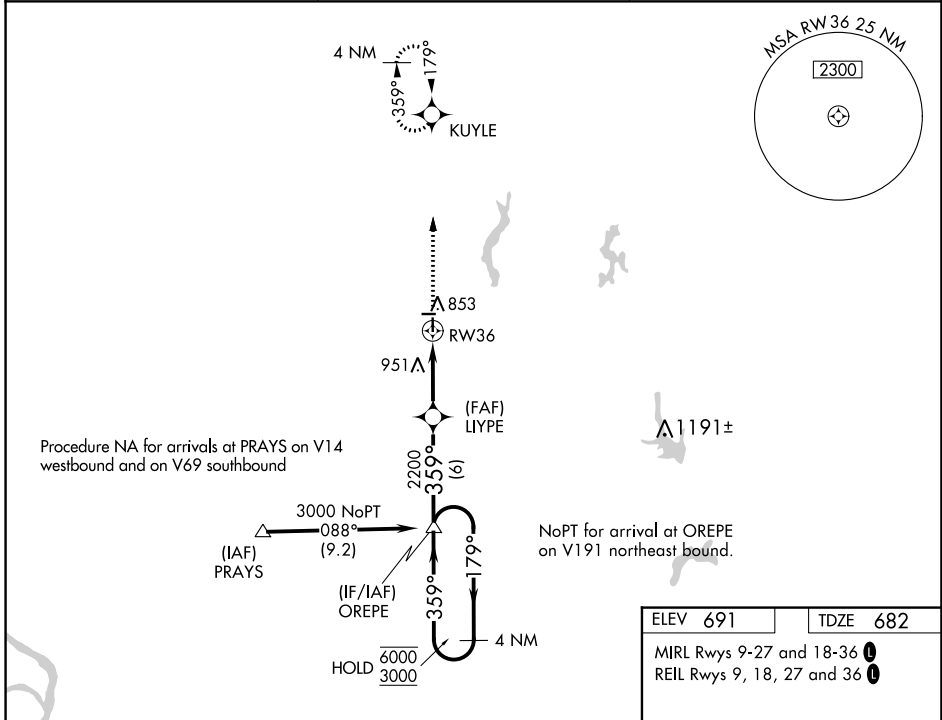
WAAS CH 40403 W36A	APP CRS 359°	Rwy Idg 4002 TDZE 682 Apt Elev 691
--	------------------------	---

RNAV (GPS) RWY 36

LITCHFIELD MUNI (3LF)

RNP APCH - GPS.	<p>MISSED APPROACH: Climb to 3000 direct KUYLE and hold.</p>
<p>Baro-VNAV and VDP NA when using Taylorville altimeter setting. For uncompensated Baro-VNAV systems, LNAV/VNAV NA below -16°C or above 54°C. When local altimeter setting not received, use Taylorville altimeter setting and increase LPV DA to 1005 feet and all visibilities ¼ SM, increase LNAV/VNAV DA to 1145 and all visibilities ¼ SM; increase all MDAs 80 feet and increase LNAV Cat C visibility ½ SM.</p>	

AWOS-3PT 118.175	ST. LOUIS APP CON 124.2 353.9	UNICOM 122.8 (CTAF) 0
----------------------------	---	---------------------------------



4 NM Holding Pattern	OREPE	LIYPE	3000 KUYLE
6000 3000	← 179°	→ 359°	↑
GP 3.00° TCH 40	← 179°	→ 359°	↑
	← 179°	→ 359°	↑
	← 179°	→ 359°	↑

CATEGORY	A	B	C	D
LPV DA	932-¾	250 (300-¾)		NA
LNAV/VNAV DA	1072-1½	390 (400-1½)		NA
LNAV MDA	1140-1	458 (500-1)	1140-1¾ 458 (500-1¾)	NA

EC-3, 26 DEC 2024 to 23 JAN 2025

EC-3, 26 DEC 2024 to 23 JAN 2025