

WAAS CH <b>97416</b> <b>W25A</b>	APP CRS <b>252°</b>	Rwy Idg TDZE <b>643</b> Apt Elev <b>643</b>	<b>4000</b> <b>643</b> <b>643</b>
--	------------------------	---	---

# RNAV (GPS) RWY 25

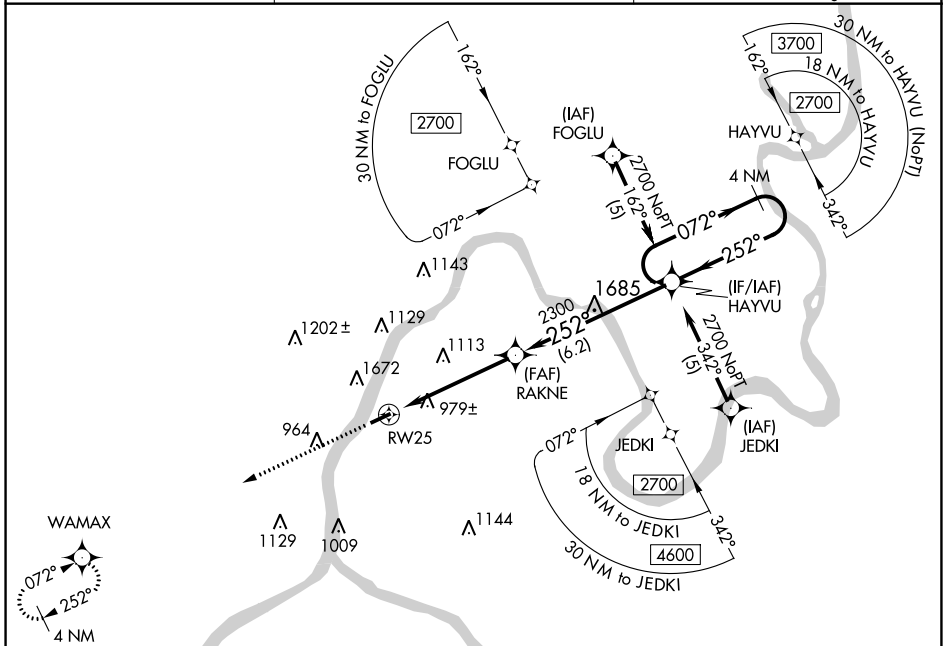
MASON COUNTY (3I2)

RNP APCH - GPS.

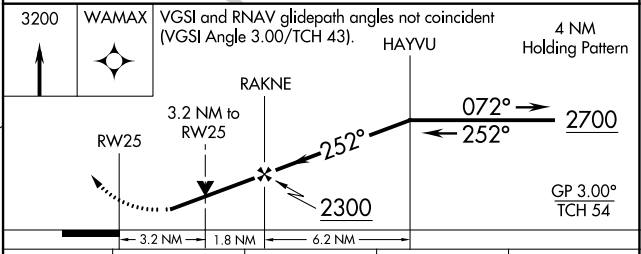
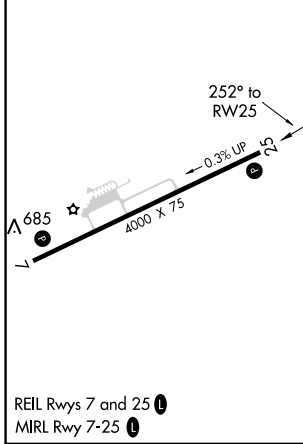
**⚠** Circling NA NW of Rwy 7-25. Baro-VNAV NA when using Athens/Albany, OH altimeter setting. For uncompensated Baro-VNAV systems, LNAV/VNAV NA below -16°C or above 47°C. Rwy 25 helicopter visibility reduction below 3/4 SM NA. When local altimeter setting not received, use Athens/Albany, OH altimeter setting and increase all DA 61 feet and all MDA 80 feet; increase LPV all Cats visibility 1/4 mile and increase LNAV-VNAV all Cats visibility 1 mile. VDP NA when using Ohio University altimeter setting.

**MISSED APPROACH:**  
Climb to 3200 direct WAMAX and hold.

AWOS-3 <b>119.675</b>	HUNTINGTON APP CON <b>128.4 270.1</b>	UNICOM <b>122.8 (CTAF) 0</b>
--------------------------	--	---------------------------------



ELEV <b>643</b>	TDZE <b>643</b>
-----------------	-----------------



CATEGORY	A	B	C	D
LPV DA		1430-2 <sup>3</sup> / <sub>4</sub>	787 (800-2 <sup>3</sup> / <sub>4</sub> )	
LNAV/VNAV DA		1727-4	1084 (1100-4)	
LNAV MDA	1700-1 <sup>1</sup> / <sub>4</sub> 1057 (1100-1 <sup>1</sup> / <sub>4</sub> )	1700-1 <sup>1</sup> / <sub>2</sub> 1057 (1100-1 <sup>1</sup> / <sub>2</sub> )	1700-3	1057 (1100-3)
CIRCLING	1700-1 <sup>1</sup> / <sub>4</sub> 1057 (1100-1 <sup>1</sup> / <sub>4</sub> )	1700-1 <sup>1</sup> / <sub>2</sub> 1057 (1100-1 <sup>1</sup> / <sub>2</sub> )	1700-3	1057 (1100-3)

NE-4, 26 DEC 2024 to 23 JAN 2025

NE-4, 26 DEC 2024 to 23 JAN 2025