

WAAS CH <b>42541</b> <b>W27A</b>	APP CRS <b>274°</b>	Rwy ldg <b>4004</b> TDZE <b>699</b> Apt Elev <b>699</b>
--	------------------------	---

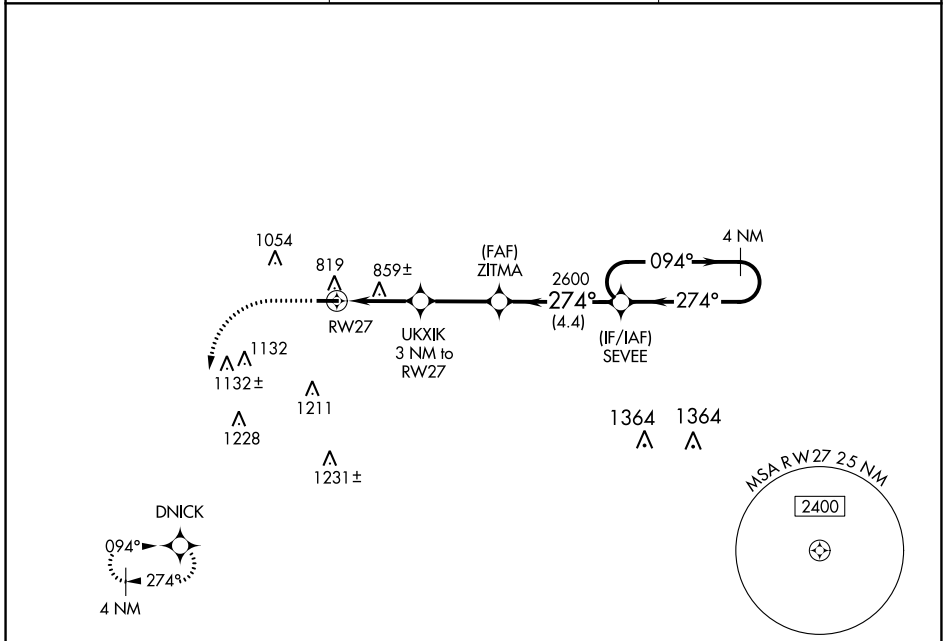
# RNAV (GPS) RWY 27

KENTLAND MUNI (50I)

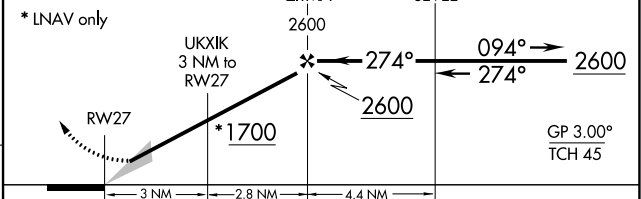
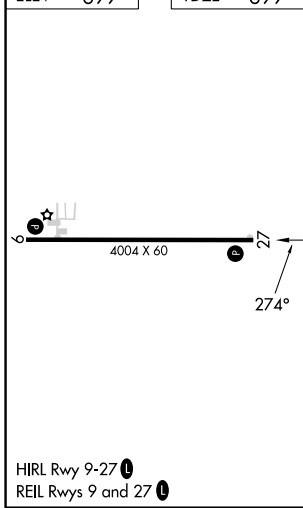
**NA** Circling to Rwy 09 NA at night. Circling NA north of Rwy 27-09. DME/DME RNP-0.3 NA. Baro-VNAV NA. Use Jasper County altimeter setting.

MISSED APPROACH: Climb to 1200 then climbing left turn to 2600 direct DNICK and hold.

RZL AWOS-3P <b>119.175</b>	CHICAGO CENTER <b>132.5 284.7</b>	UNICOM <b>122.8 (CTAF) 0</b>
-------------------------------	--------------------------------------	---------------------------------



ELEV <b>699</b>	TDZE <b>699</b>
-----------------	-----------------



CATEGORY	A	B	C	D
LPV DA	986-1 287 (300-1)			NA
LNAV/DA	1006-1 307 (400-1)			NA
LNAV MDA	1160-1	461 (500-1)	1160-1 <sup>3</sup> / <sub>8</sub> 461 (500-1 <sup>3</sup> / <sub>8</sub> )	NA
<b>C</b> CIRCLING	1160-1 461 (500-1)	1200-1 501 (600-1)	1200-1 <sup>1</sup> / <sub>2</sub> 501 (600-1 <sup>1</sup> / <sub>2</sub> )	NA

EC-2, 26 DEC 2024 to 23 JAN 2025

EC-2, 26 DEC 2024 to 23 JAN 2025