

VORTAC MVC <b>116.8</b> Chan <b>115</b>	APP CRS <b>095°</b>	Rwy Idg <b>5004</b> TDZE <b>259</b> Apt Elev <b>259</b>
---	------------------------	---

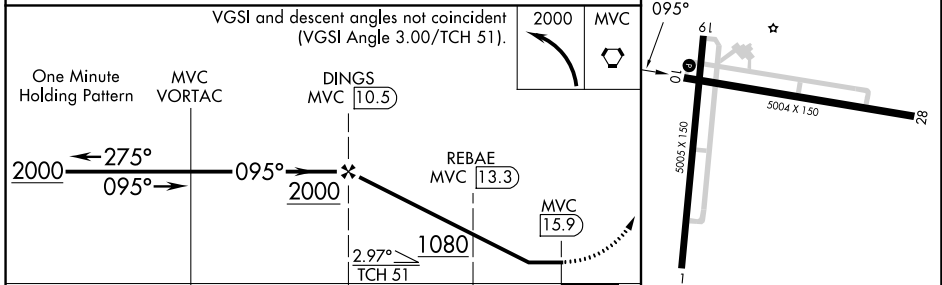
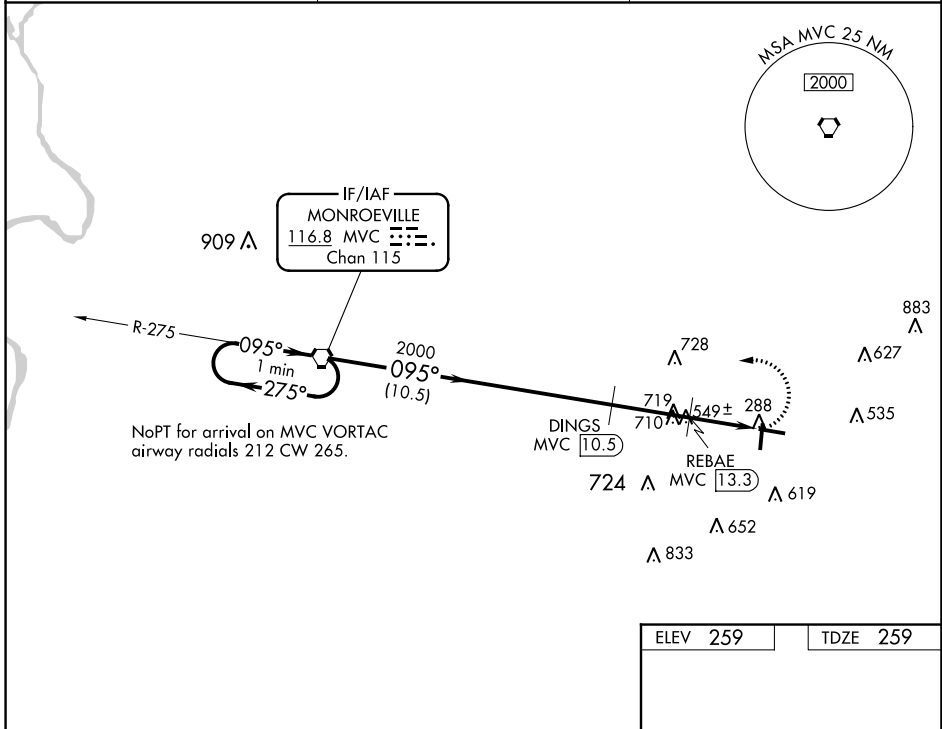
# VOR/DME RWY 10

EVERGREEN RGNL/MIDDLETON FLD (GZH)

**⚠** When local altimeter setting not received, use Andalusia/Opp altimeter setting and increase all MDAs 100 feet and visibility Cat C/D ½ SM. DME required. Rwy 10 helicopter visibility reduction below 1 SM NA. Straight-in Rwy 10 NA at night, Circling Rwy 10, 19 NA at night.

**⚠** MISSED APPROACH:  
Climbing left turn to 2000  
direct MVC VORTAC and hold.

ASOS <b>133.425</b>	JACKSONVILLE CENTER <b>134.15 338.3</b>	UNICOM <b>122.7 (CTAF) 0</b>
------------------------	--	---------------------------------



CATEGORY	A	B	C	D
S-10	800-1	541 (600-1)	800-1 $\frac{5}{8}$	541 (600-1 $\frac{5}{8}$ )
CIRCLING	800-1 541 (600-1)	840-1 581 (600-1)	980-2 721 (800-2)	1080-2 $\frac{3}{4}$ 821 (900-2 $\frac{3}{4}$ )

ELEV 259	TDZE 259
----------	----------

MIRL Rwy 1-19 and 10-28 0

SE-4, 26 DEC 2024 to 23 JAN 2025

SE-4, 26 DEC 2024 to 23 JAN 2025