

GREENCASTLE, INDIANA

AL-6336 (FAA)

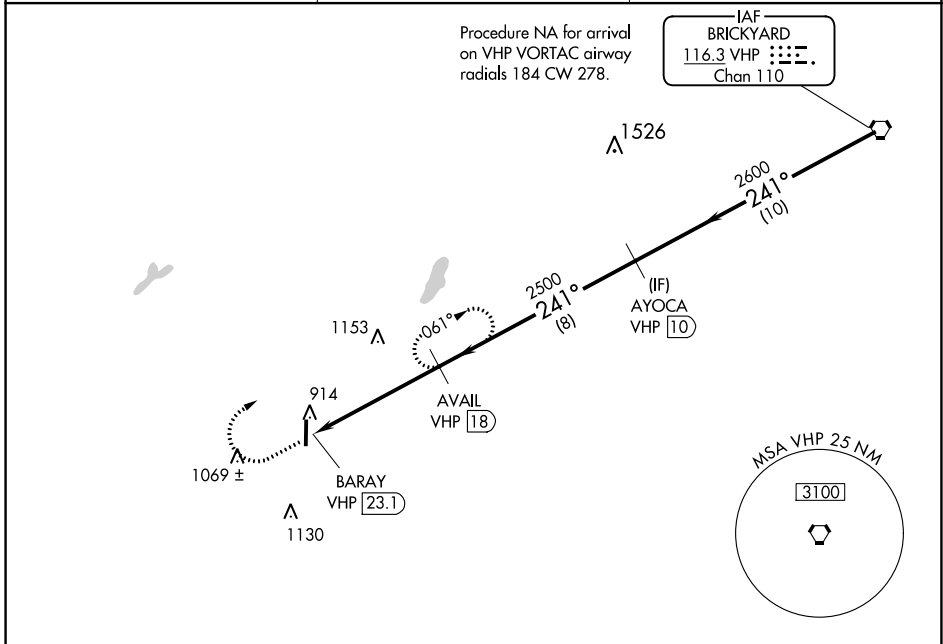
23166

VORTAC VHP 116.3 Chan 110	APP CRS 241°	Rwy Idg TDZE Apt Elev	N/A N/A 842
---	------------------------	-----------------------------	--

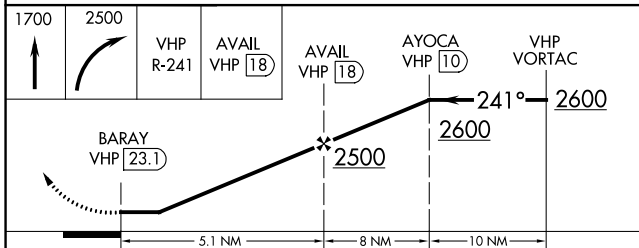
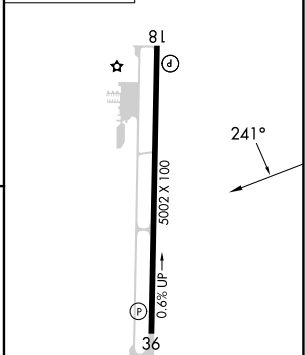
VOR-A
PUTNAM COUNTY RGNL (GPC)

▼ DME required.	MISSED APPROACH: Climb to 1700 then climbing right turn to 2500 on VHP VORTAC R-241 to AVAIL/18 DME and hold.
------------------------	---

AWOS-3PT 118.125	INDIANAPOLIS APP CON 119.05 317.8	UNICOM 122.8 (CTAF) 0
----------------------------	---	--



ELEV 842



CATEGORY	A	B	C	D
C CIRCLING	1420-1	578 (600-1)	1480-1¾ 638 (700-1¾)	1480-2 638 (700-2)

MRL Rwy 18-36 **0**
REIL Rwy 18

GREENCASTLE, INDIANA
Amdt 7 05JAN17

39°38'N-86°49'W

PUTNAM COUNTY RGNL (GPC)
VOR-A

EC-2, 26 DEC 2024 to 23 JAN 2025

EC-2, 26 DEC 2024 to 23 JAN 2025