

WAAS CH <b>82311</b> <b>W22A</b>	APP CRS <b>218°</b>	Rwy Idg TDZE <b>1025</b> Apt Elev <b>1025</b>	<b>6000</b>
--	------------------------	---	-------------

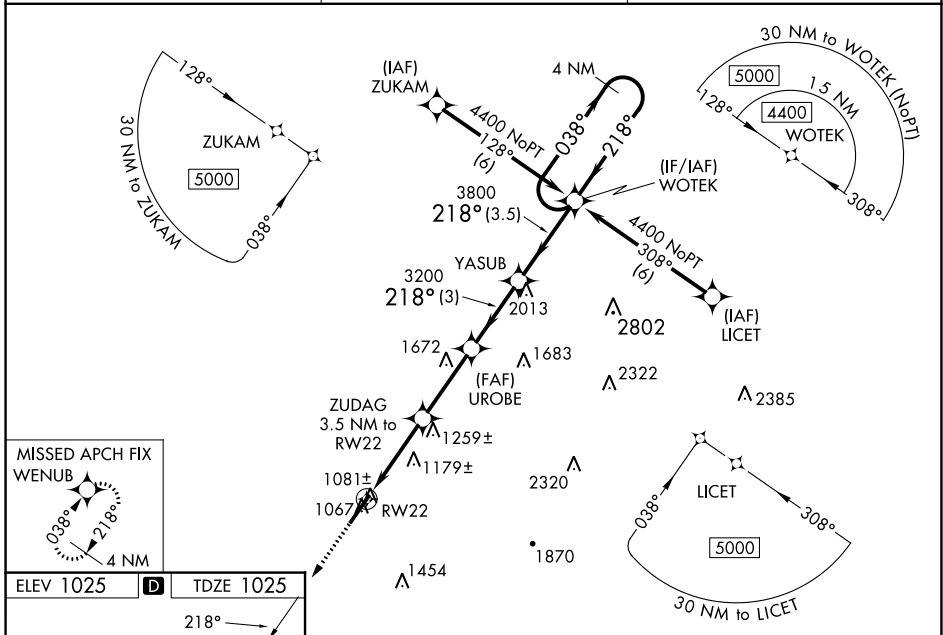
# RNAV (GPS) RWY 22

UPPER CUMBERLAND RGNL (SRB)

**⚠** Baro-VNAV NA when using Crossville altimeter setting. For uncompensated Baro-VNAV systems, LNAV/VNAV NA below -17°C (2°F) or above 54°C (130°F). DME/DME RNP-0.3 NA. When local altimeter setting not received, use Crossville altimeter setting and increase LPV DA to 1447 feet, LNAV/VNAV DA to 1633 feet, increase LPV and LNAV/VNAV visibility ¾ SM. Increase all MDA 180 feet and LNAV Cat C visibility ¼ SM, Cat D visibility ½ SM. Increase Circling Cat C visibility ¾ SM and Circling Cat D visibility ¼ SM. VDP NA when using Crossville altimeter setting.

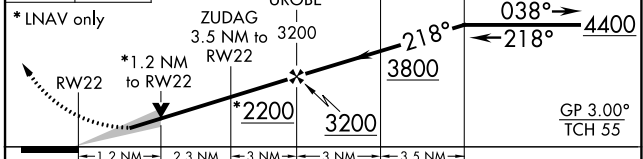
**⚠** MISSED APPROACH: Climb to 4000 direct WENUB and hold.

AWOS-3P <b>128.25</b>	MEMPHIS CENTER <b>132.9 290.3</b>	UNICOM <b>122.975 (CTAF) 0</b>
--------------------------	--------------------------------------	-----------------------------------



ELEV 1025	<b>D</b>	TDZE 1025
-----------	----------	-----------

4000 WENUB VGSI and RNAV glidepath not coincident (VGSI Angle 3.00/TCH 25). 4 NM WOTEK Holding Pattern



CATEGORY	A	B	C	D
LPV DA		1275-¾	250 (300-¾)	
LNAV/VNAV DA		1461-1½	436 (500-1½)	
LNAV MDA	1440-1	415 (500-1)	1440-1¼	415 (500-1¼)
CIRCLING	1480-1	455 (500-1)	1600-1½	1880-2¾
			575 (600-1½)	855 (900-2¾)

HIRL Rwy 4-22 **0**  
REIL Rwys 4 and 22 **0**  
RLS Rwy 4 **0**

SE-1, 26 DEC 2024 to 23 JAN 2025

SE-1, 26 DEC 2024 to 23 JAN 2025