

APP CRS	Rwy Idg	2163
174°	TDZE	416
	Apt Elev	416

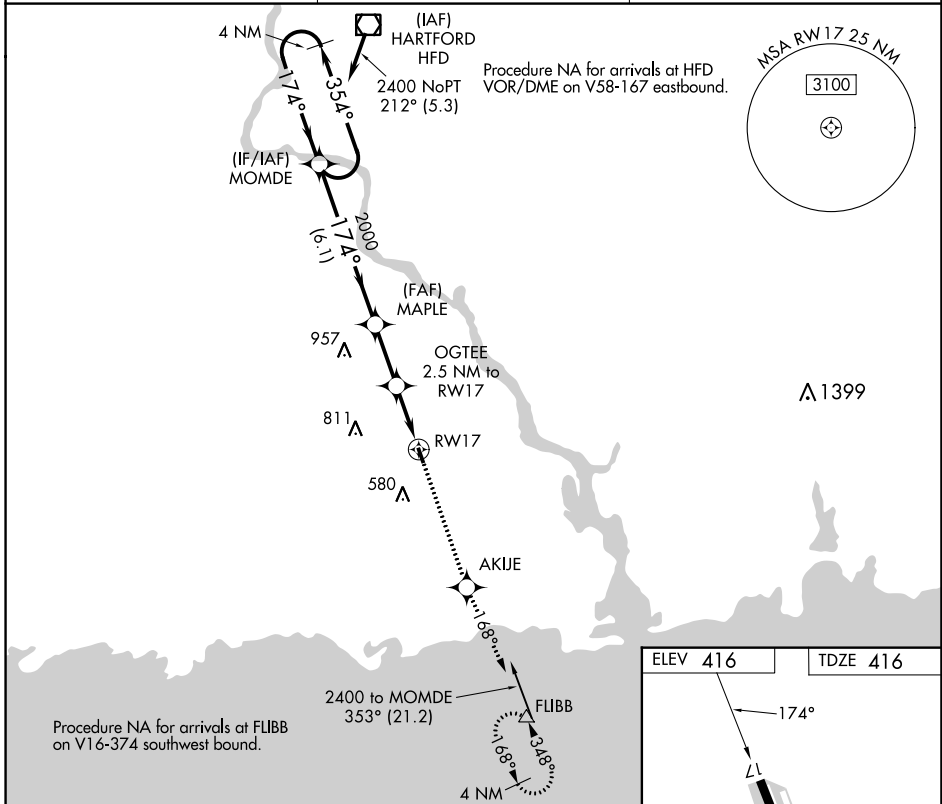
RNAV (GPS) RWY 17

CHESTER (SNC)

▼ DME/DME RNP-0.3 NA. Procedure NA at night. Helicopter visibility reduction below 1 SM NA.
▲ When local altimeter setting not received, use Meriden altimeter setting and increase all MDA 100 feet.

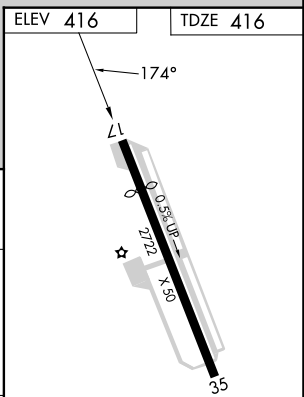
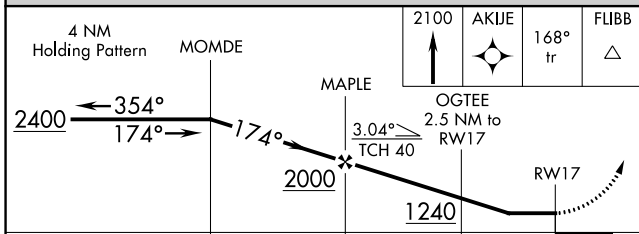
MISSED APPROACH: Climb to 2100 direct AKIJE and via track 168° to FLIBB and hold.

AWOS-3 118.325	NEW YORK APP CON 124.075 343.65	UNICOM 122.725 (CTAF)
--------------------------	---	---------------------------------



NE-1, 26 DEC 2024 to 23 JAN 2025

NE-1, 26 DEC 2024 to 23 JAN 2025



	4 NM Holding Pattern		MOMDE		MAPLE		AKIJE		FLIBB	
	2400		2000		1240		2100		2100	
	← 354°		→ 174°		→ 174°		→ 304°		→ 168° tr	
			TCH 40		RWY 17					
			6.1 NM		2.3 NM		2.5 NM			
CATEGORY	A		B		C		D			
LNVA MDA	960-1		544 (600-1)		NA		NA			
CIRCLING	960-1 544 (600-1)		1020-1 604 (700-1)		NA		NA			

REIL Rwy 17 and 35
MIRL Rwy 17-35