

APP CRS	Rwy Idg	4006
167°	TDZE	442
	Apt Elev	442

RNAV (GPS) RWY 17

RUSK COUNTY (R.F.I)

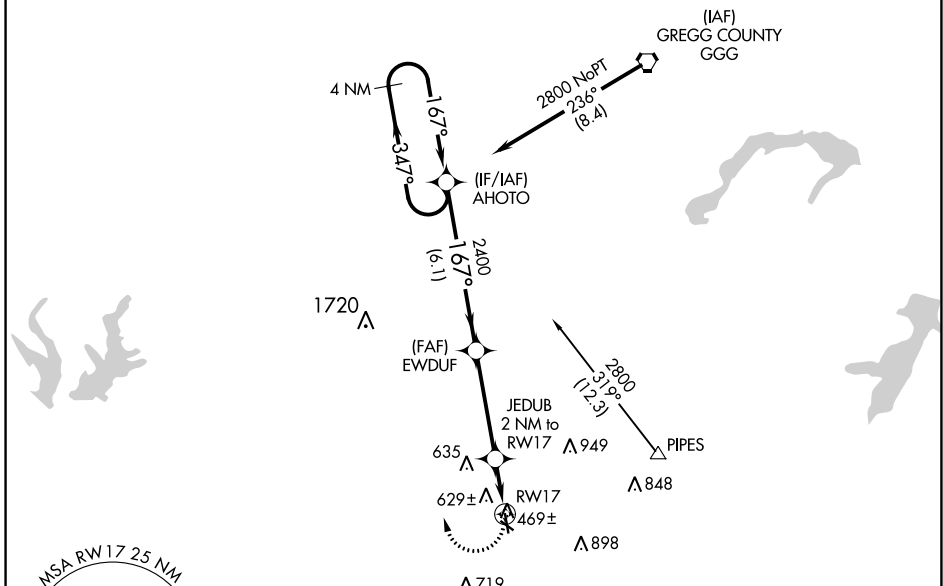
RNP APCH

▼ Rwy 17 helicopter visibility reduction below 1 SM NA. When local altimeter setting not received, use Longview altimeter setting and increase all MDA 60 feet.
 ▲ Rwy 17 Straight-in minimums NA at night. Circling Rwy 12, 17 and 30 NA at night.

MISSED APPROACH: Climbing right turn to 2800 direct AHOTO and hold.

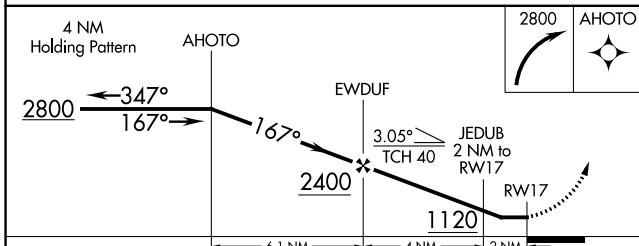
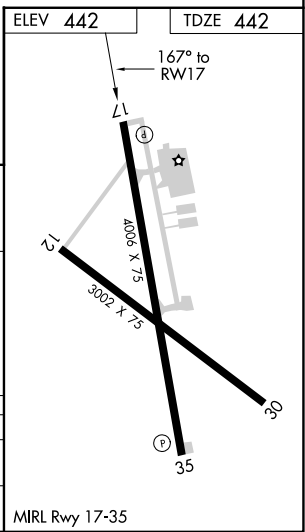
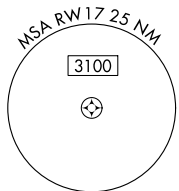
AWOS-3 119.375	LONGVIEW APP CON★ 124.275 257.975	UNICOM 122.8 (CTAF)
--------------------------	---	-------------------------------

Procedure NA for arrivals at GGG VORTAC on V94 eastbound.



SC-2, 26 DEC 2024 to 23 JAN 2025

SC-2, 26 DEC 2024 to 23 JAN 2025



CATEGORY	A	B	C	D
LNVA MDA	980-1	538 (600-1)	980-1½ 538 (600-1½)	NA
CIRCLING	980-1	538 (600-1)	1200-2½ 758 (800-2½)	NA