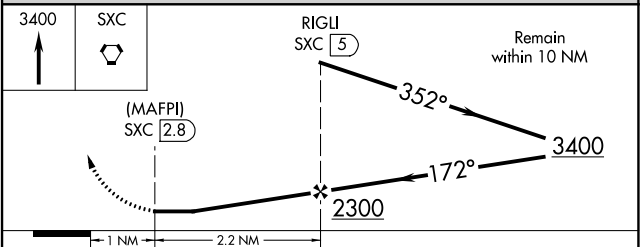
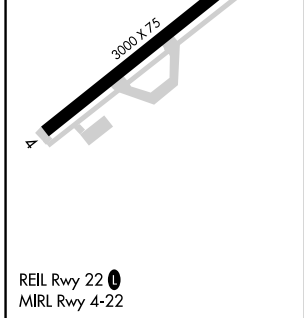
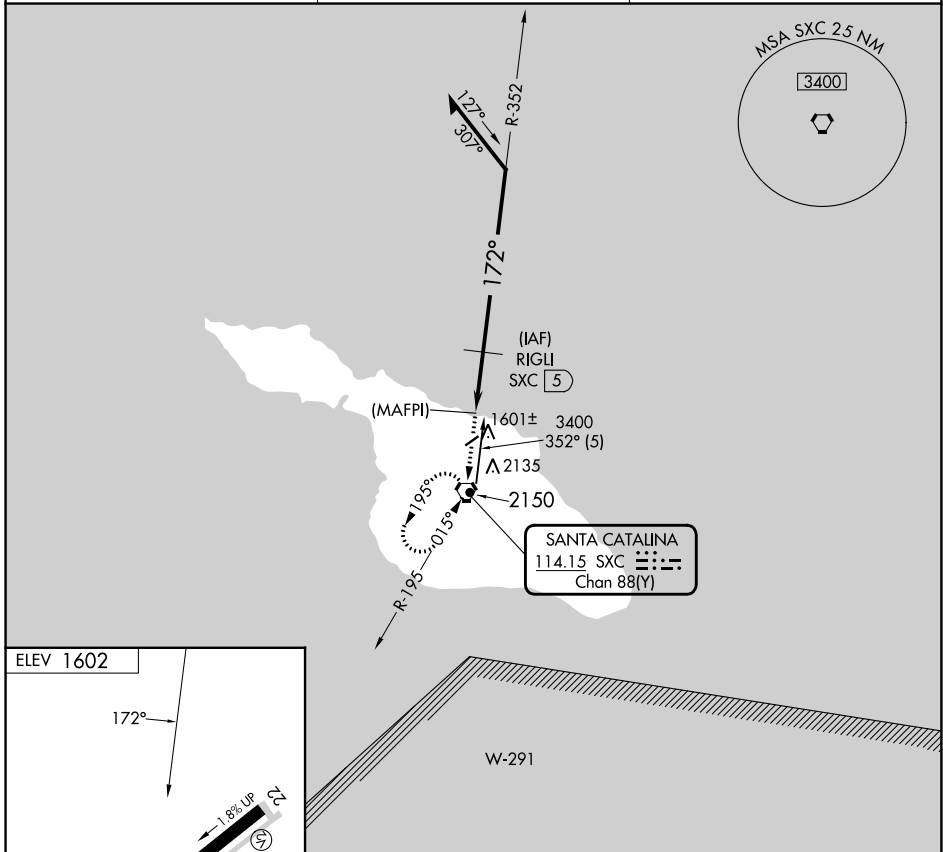


VORTAC SXC 114.15 Chan 88(Y)	APP CRS 172°	Rwy Idg TDZE Apt Elev N/A N/A 1602
--	------------------------	--

VOR/DME or GPS-B CATALINA (AVX)

<p>NA Circling southeast runway 4-22 not authorized.</p>	<p>MISSED APPROACH: Climb to 3400 direct SXC VORTAC and hold.</p>
---	---

<p>ASOS 120.675</p>	<p>SOCAL APP CON 127.4 323.275</p>	<p>UNICOM 122.7 (CTAF)</p>
--------------------------------	---	---------------------------------------



CATEGORY	A	B	C	D
CIRCLING	2220-1	618 (700-1)	NA	

SW-3, 26 DEC 2024 to 23 JAN 2025

SW-3, 26 DEC 2024 to 23 JAN 2025