

CLARION, IOWA

AL-6369 (FAA)

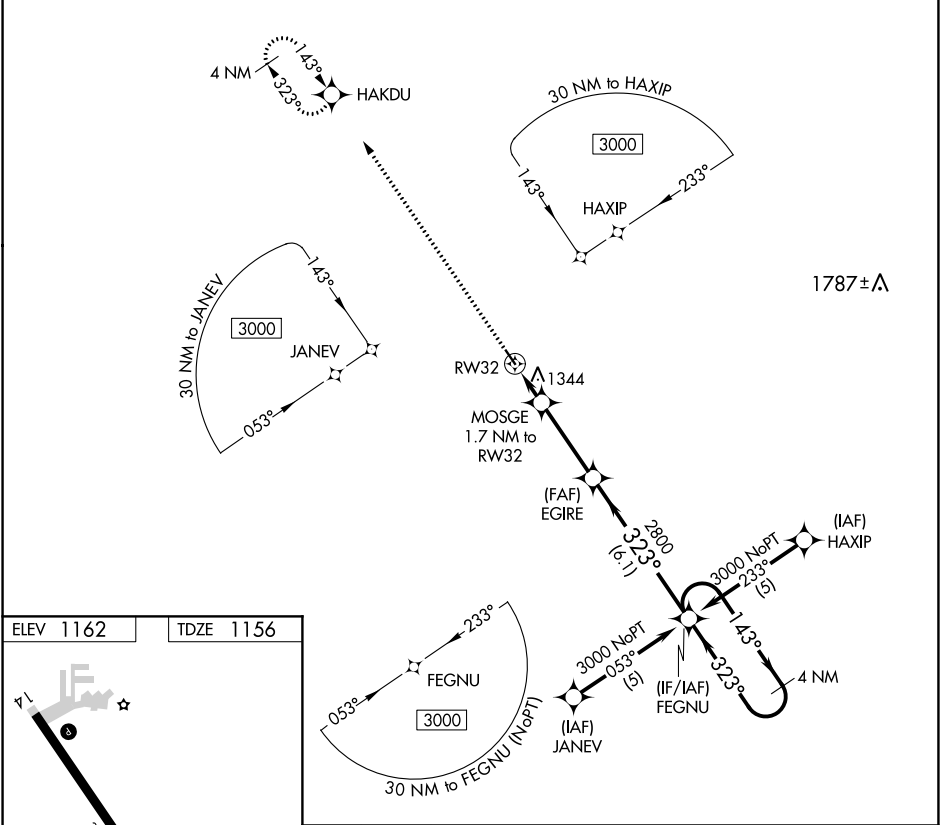
19311

APP CRS 323°	Rwy Idg 3455
	TDZE 1156
	Apt Elev 1162

RNAV (GPS) RWY 32

CLARION MUNI (CAV)

RNP APCH.		MISSED APPROACH: Climb to 3000 direct HAKDU and hold.
<p>▼ When local altimeter setting not received, use Fort Dodge altimeter setting and increase all MDA 60 feet. Rwy 32 helicopter visibility reduction below ¼ SM NA.</p>		
AWOS-3 126.575	MINNEAPOLIS CENTER 134.0 288.3	UNICOM 122.8 (CTAF) 0



ELEV 1162	TDZE 1156
-----------	-----------

REIL Rwy 14 and 32 0
MIRL Rwy 14-32 0

3000 HAKDU	VGSi and descent angles not coincident (VGSi Angle 3.00/TCH 43).		FEGNU	4 NM Holding Pattern	
EGIRE	MOSGE 1.7 NM to RW32	3.04° TCH 40	EGIRE	3000	
RW32	1740	323°	143°	3000	
CATEGORY		A	B	C	D
LNAV MDA		1600-1 444 (500-1)		NA	

NC-3, 26 DEC 2024 to 23 JAN 2025

NC-3, 26 DEC 2024 to 23 JAN 2025

CLARION, IOWA
Orig-A 07NOV19

42°44'N-93°46'W

CLARION MUNI (CAV) RNAV (GPS) RWY 32