

WAAS CH <b>72827</b> <b>W09A</b>	APP CRS <b>088°</b>	Rwy Idg TDZE Apt Elev	<b>4218</b> <b>1021</b> <b>1021</b>
--	------------------------	-----------------------------	---

# RNAV (GPS) RWY 9

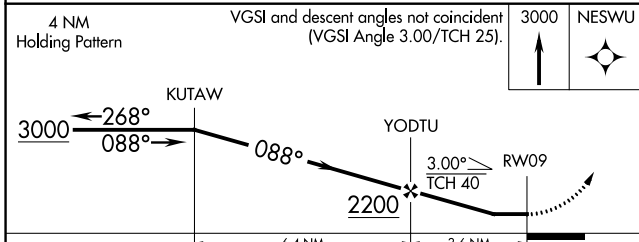
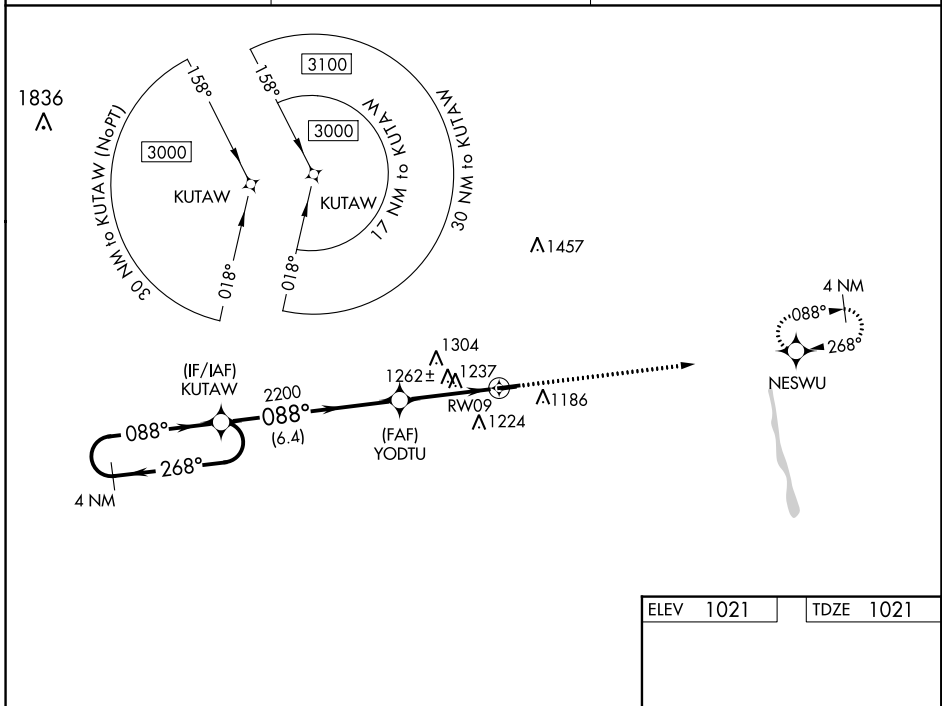
UNION COUNTY (MRT)

RNP APCH - GSS.

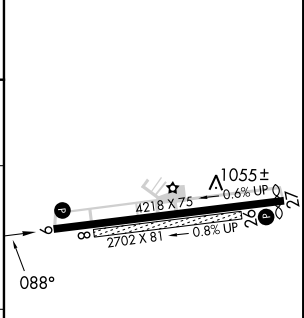
▼ Rwy 9 helicopter visibility reduction below 3/4 SM NA. When local altimeter setting not received, use John Glenn Columbus Intl altimeter setting and increase all MDAs 100 feet; increase LP visibility Cat C/D 1/4 SM, LNAV visibility Cat C/D 3/8 SM, and Circling visibility Cat C/D 1/2 SM. When Circling to Rwy 27 at night, operational VGSI required, remain on or above VGSI glidepath until threshold. Circling NA to Rwys 8 and 26.

MISSED APPROACH: Climb to 3000 direct NESWU and hold.

AWOS-3 <b>119.275</b>	COLUMBUS APP CON <b>125.95 317.775</b>	UNICOM <b>122.8 (CTAF)</b>
--------------------------	---	-------------------------------



ELEV 1021	TDZE 1021
-----------	-----------



CATEGORY	A	B	C	D
LP MDA	1500-1	479 (500-1)	1500-1 3/8	479 (500-1 3/8)
LNAV MDA	1520-1	499 (500-1)	1520-1 3/8	499 (500-1 3/8)
CIRCLING	1520-1 499 (500-1)	1540-1 519 (600-1)	1620-1 1/2 599 (600-1 1/2)	1620-2 599 (600-2)

EC-2, 26 DEC 2024 to 23 JAN 2025

EC-2, 26 DEC 2024 to 23 JAN 2025