

WAAS CH 42611 W18A	APP CRS 181°	Rwy Idg TDZE Apt Elev	4001 881 887
--	------------------------	-----------------------------	---

RNAV (GPS) RWY 18

ELTON HENSLEY MEML (F'TT)

RNP APCH.

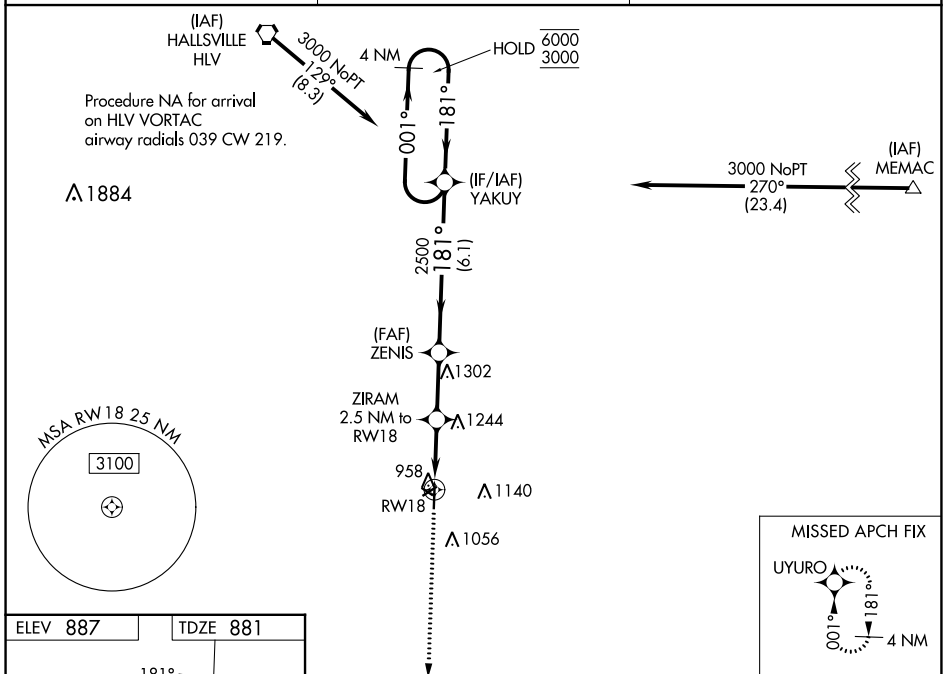
⚠ NA Circling NA to Rwy 12 and 30. Circling Rwy 24 NA at night. Rwy 18 helicopter visibility reduction below 1 SM NA. Baro-VNAV NA. Use Columbia altimeter setting; when not received use Jefferson City altimeter setting and increase all DA 62 feet, all MDA 80 feet, increase LPV and LNAV/VNAV all Cats visibility ¼ mile, LNAV and Circling Cat C visibility ¼ mile.

MISSED APPROACH: Climb to 3000 direct UYURO and hold.

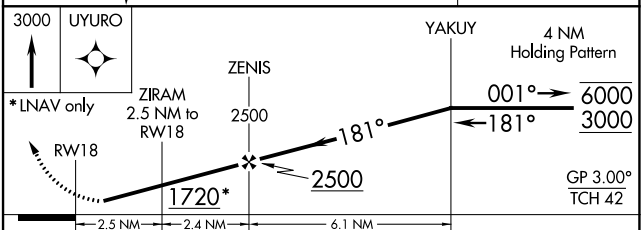
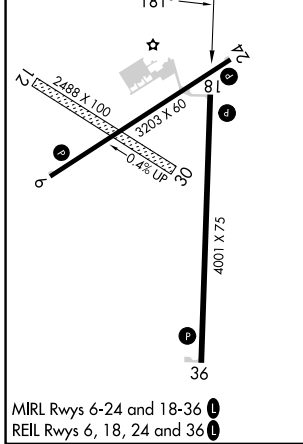
COU ASOS
128.45

MIZZU APP CON
124.375 353.925

UNICOM
122.7 (CTAF) 0



ELEV 887	TDZE 881
----------	----------



CATEGORY	A	B	C	D
LPV DA	1155-1 274 (300-1)			NA
LNAV/VNAV DA	1313-1½ 432 (500-1½)			NA
LNAV MDA	1520-1 639 (700-1)	1520-1¾ 639 (700-1¾)		NA
C CIRCLING	1520-1 633 (700-1)	1560-2 673 (700-2)		NA

NC-3, 26 DEC 2024 to 23 JAN 2025

NC-3, 26 DEC 2024 to 23 JAN 2025