

BLTWY SEVEN DEPARTURE (RNAV)

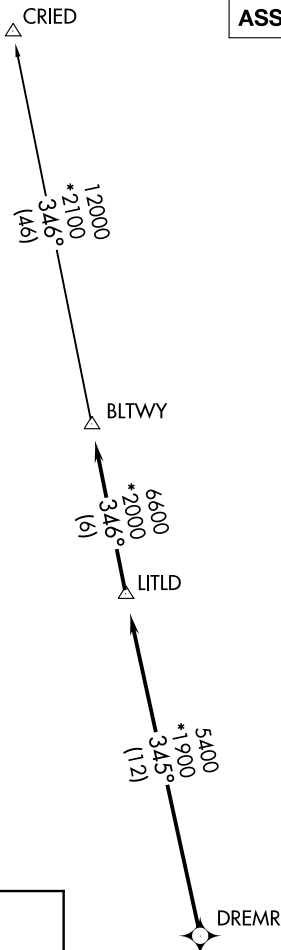
CTAF
122.9
HOUSTON DEP CON
134.45 284.0

**TOP ALTITUDE:
ASSIGNED BY ATC**

NOTE: RADAR required.
NOTE: DME/DME/IRU or GPS required.
NOTE: RNAV 1.

TAKEOFF MINIMUMS

Rwys 17, 35: NA - Environmental
Rwys 12, 30: Standard with minimum climb
of 500' per NM to 540.



SC-5, 26 DEC 2024 to 23 JAN 2025

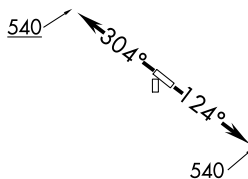
SC-5, 26 DEC 2024 to 23 JAN 2025

DEPARTURE ROUTE DESCRIPTION

TAKEOFF RUNWAY 12: Climb on heading 124° to 540 for RADAR vectors to DREMR, thence . . .
TAKEOFF RUNWAY 30: Climb on heading 304° to 540 for RADAR vectors to DREMR, thence . . .

...on track 345° to LITLD, then on track 346° to BLTWY, then on (transition). Maintain ATC assigned altitude. Expect filed altitude 10 minutes after departure.

CRIED TRANSITION (BLTWY7.CRIED)



NOTE: Chart not to scale.