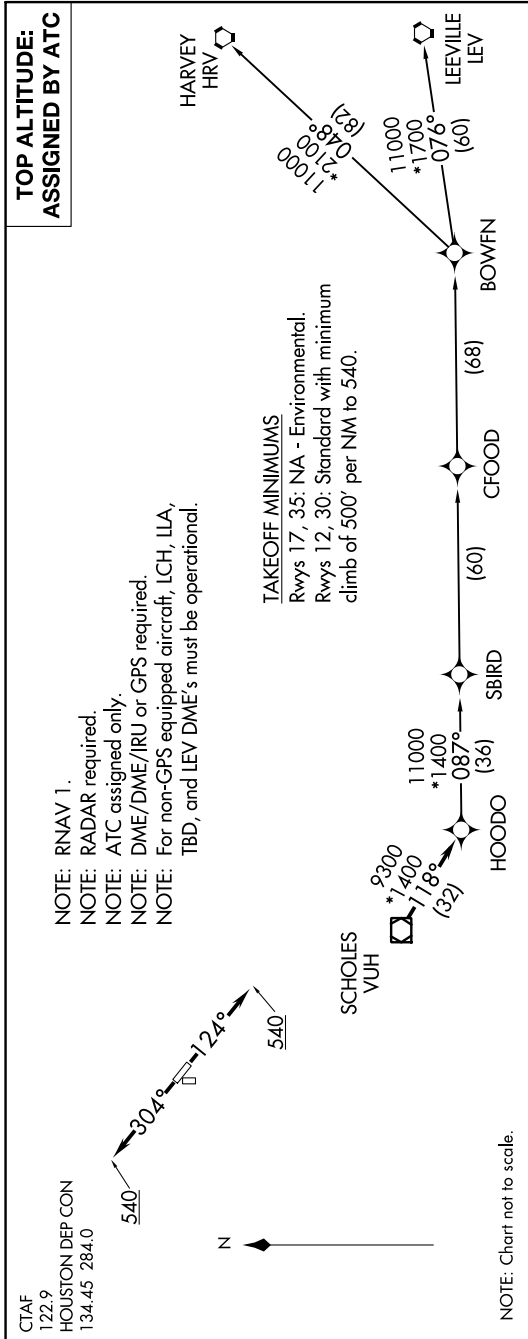


SC-5, 26 DEC 2024 to 23 JAN 2025



CTAF
 122.9
 HOUSTON DEP CON
 134.45 284.0

NOTE: RNAV 1.

NOTE: RADAR required.

NOTE: ATC assigned only.

NOTE: DME/DME/IRU or GPS required.

NOTE: For non-GPS equipped aircraft, LCH, ILA, TBD, and LEV DME's must be operational.

TAKEOFF MINIMUMS

Rwys 17, 35: NA - Environmental.
 Rwys 12, 30: Standard with minimum
 climb of 500' per NM to 540.

NOTE: Chart not to scale.



DEPARTURE ROUTE DESCRIPTION

TAKEOFF RUNWAY 12: Climb on heading 124° to 540, for RADAR vectors to VUH VOR/DME, thence
TAKEOFF RUNWAY 30: Climb on heading 304° to 540, for RADAR vectors to VUH VOR/DME, thence

. . . . on track 118° to HOODO, then on (transition). Maintain ATC assigned altitude.
 Expect filed altitude 10 minutes after departure.

- BOWFN TRANSITION (HOODO7.BOWFN)
- CFOOD TRANSITION (HOODO7.CFOOD)
- HARVEY TRANSITION (HOODO7.HRV)
- LEEVILLE TRANSITION (HOODO7.LEV)
- SBIRD TRANSITION (HOODO7.SBIRD)

SC-5, 26 DEC 2024 to 23 JAN 2025