

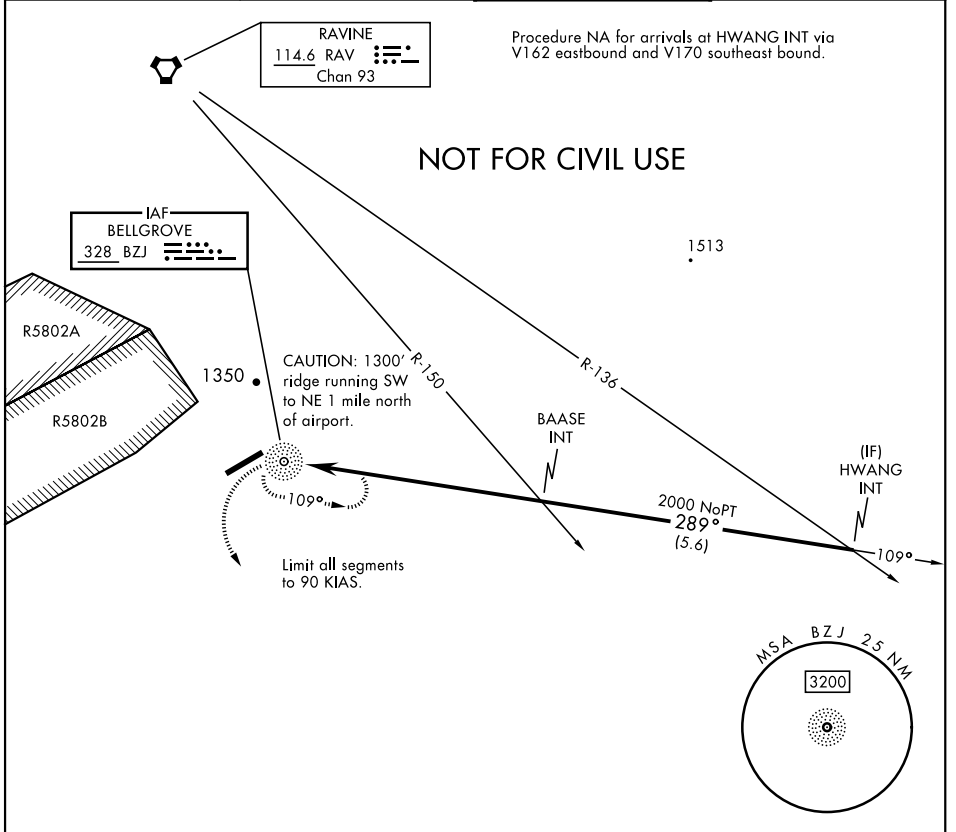
# COPTER NDB Z-289°

NDB BZJ <b>328</b>	APCH CRS <b>289°</b>	Rwy ldg TDZE Arprt Elev <b>N/A</b> <b>N/A</b> <b>487</b>	AL-6422 [USA]	MUIR AHP (KMUI)
-----------------------	-------------------------	--	---------------	-----------------

▼ VOR receiver required for this approach.  
When local altimeter setting not received, use Harrisburg Intl altimeter and increase MDA by 80 ft, vis by ¼ mile, and ceiling by 100 ft.

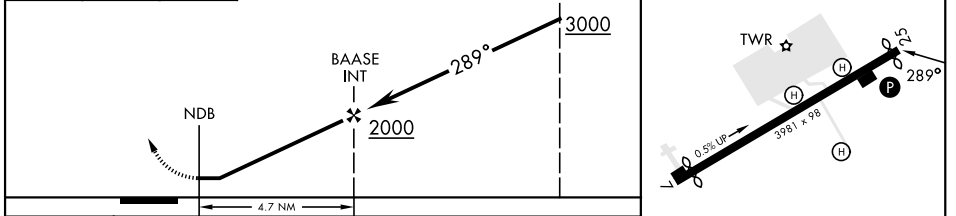
MISSED APPROACH: Climb to 2000 via hdg 160° then climbing left turn to 2900 direct BZJ NDB and hold. Continue climb in hold.

ASOS <b>124.175</b>	HARRISBURG APP CON <b>118.25 269.45</b>	MUIR TOWER ★ <b>126.2 (CTAF) 0 290.325</b>	GND CON <b>135.675 269.525</b>
------------------------	--	---	-----------------------------------



2000 hdg 160°	2900	BZJ	ELEV 487
------------------	------	-----	----------

Rwy 7 ldg 3631'  
Rwy 25 ldg 3860'



CATEGORY	COPTER			MIRL Rwy 7-25
H-289°	1360-1	873	(900-1)	REIL all rwys

# COPTER NDB Z-289°

NE-4, 26 DEC 2024 to 23 JAN 2025

NE-4, 26 DEC 2024 to 23 JAN 2025