

FORT INDIANTOWN GAP, PENNSYLVANIA

COPTER RNAV (GPS)-054°

APCH CRS 054°	Rwy Idg TDZE Arpt Elev	3631 487 487
-------------------------	------------------------------	---

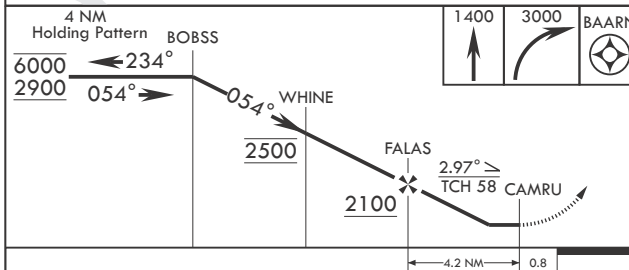
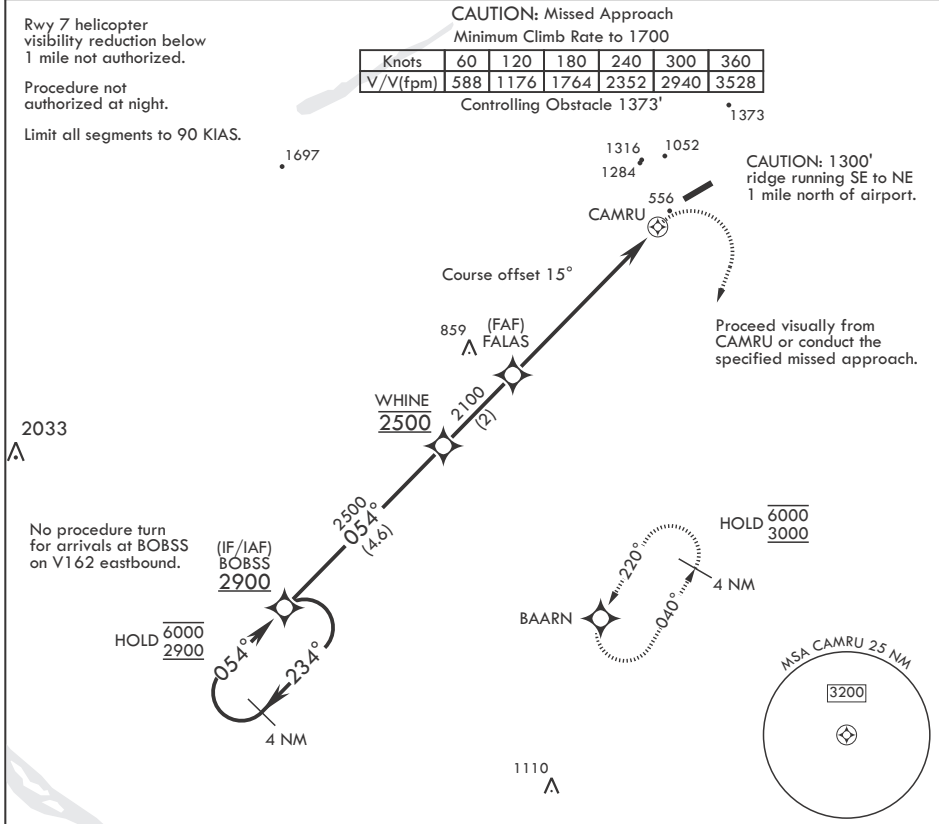
(USA)

MUIR AHP (KMUI)

RNP APCH-GPS

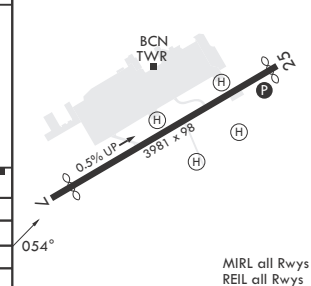
MISSED APPROACH: Climb to 1400 then climbing right turn to 3000 direct BARRN and hold.

ASOS 124.175	HARRISBURG APP CON/DEP CON 118.25 269.45	TOWER * 126.2 (CTAF) 0 290.325	GND CON 135.675 269.525
------------------------	--	--	-----------------------------------



1400	3000	BAARN	ELEV 487	TDZE 487
------	------	-------	----------	----------

Rwy 7 Idg 3631'
Rwy 25 Idg 3860'



CATEGORY	COPTER	
LNAV MDA	1380-1¼	893 (900-1¼)
HARRISBURG INTL ALTIMETER SETTING MINIMUMS		
LNAV MDA	1460-1¼	973 (1000-1¼)

FORT INDIANTOWN GAP, PENNSYLVANIA

40°26'N - 76°34'W

MUIR AHP (KMUI)

Orig 28NOV24

COPTER RNAV (GPS)-054°

NE-4, 26 DEC 2024 to 23 JAN 2025

NE-4, 26 DEC 2024 to 23 JAN 2025