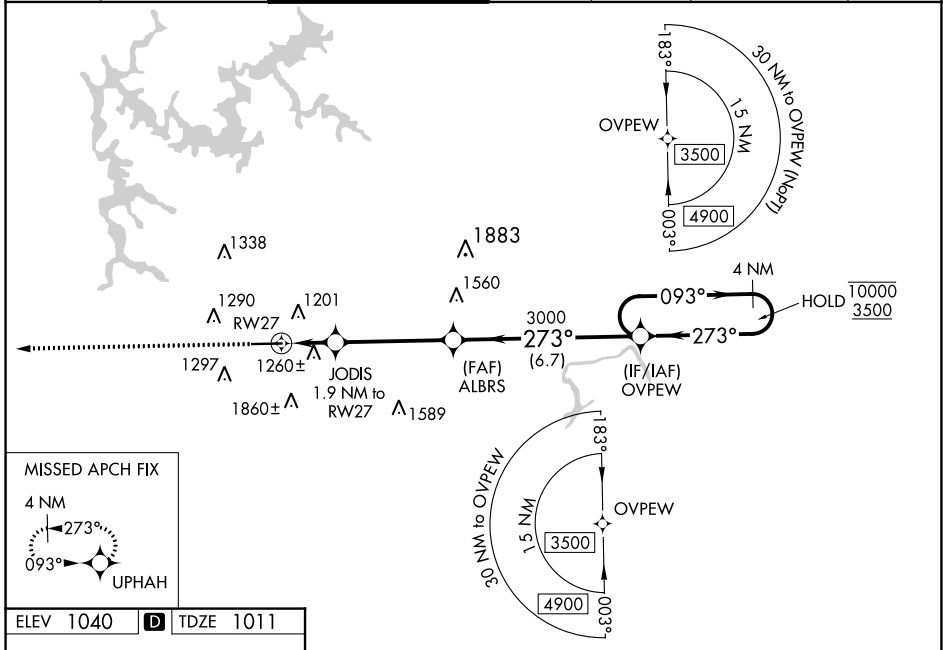


WAAS CH 97308 W27A	APP CRS 273°	Rwy Idg TDZE 1011 Apt Elev 1040	5374
----------------------------------------	------------------------	-----------------------------------------------------	-------------

RNAV (GPS) RWY 27

COBB COUNTY INTL/MCCOLLUM FLD (RYY)

RNP APCH-GPS.				MALSF		MISSED APPROACH: Climb to 3500 direct UPHAH and hold.	
<p>⚠ Inop table does not apply to LPV. For uncompensated Baro-VNAV systems, LNAV/VNAV NA below -17°C or above 54°C. For inop ALS, increase LNAV/VNAV all Cats and LNAV Cats C and D visibility to 1½ SM. Circling Rwy 9 NA at night.</p>							
ATIS 128.125	ATLANTA APP CON 121.0 268.7	MCCOLLUM TOWER ★ 125.9 (CTAF) 0	GND CON 119.0	CLNC DEL 119.0	CLNC DEL 121.0 268.7 (When twr closed)	UNICOM 122.7	



ELEV 1040	D	TDZE 1011
<p>MISSED APCH FIX</p> <p>4 NM</p> <p>273°</p> <p>093°</p> <p>UPHAH</p>		
<p>HIRL Rwy 9-27 0</p>		

3500		UPHAH	
<p>4 NM Holding Pattern</p> <p>OVPEW</p> <p>10000</p> <p>3500</p> <p>GP 3.00°</p> <p>TCH 46</p>		<p>ALBRS</p> <p>3000</p> <p>JODIS 1.9 NM to RWY 27</p> <p>1660</p> <p>3000</p> <p>273°</p> <p>093°</p> <p>273°</p> <p>10000</p> <p>3500</p> <p>1.9 NM</p> <p>4.2 NM</p> <p>6.7 NM</p>	
CATEGORY	A	B	D
LPV DA	1211-¾		200 (200-¾)
LNAV/VNAV DA	1520-1¼		509 (500-1¼)
LNAV MDA	1520-¾	509 (500-¾)	1520-1¼ 509 (500-1¼)
C CIRCLING	1800-1	760 (800-1)	2180-3 1140 (1200-3)

SE-4, 26 DEC 2024 to 23 JAN 2025

SE-4, 26 DEC 2024 to 23 JAN 2025