

WAAS CH <b>50500</b> <b>W25A</b>	APP CRS <b>246°</b>	Rwy Idg TDZE <b>10</b> Apt Elev <b>11</b>	<b>4463</b>
--	------------------------	---	-------------

# RNAV (GPS) RWY 25

NEW SMYRNA BEACH MUNI (EVB)

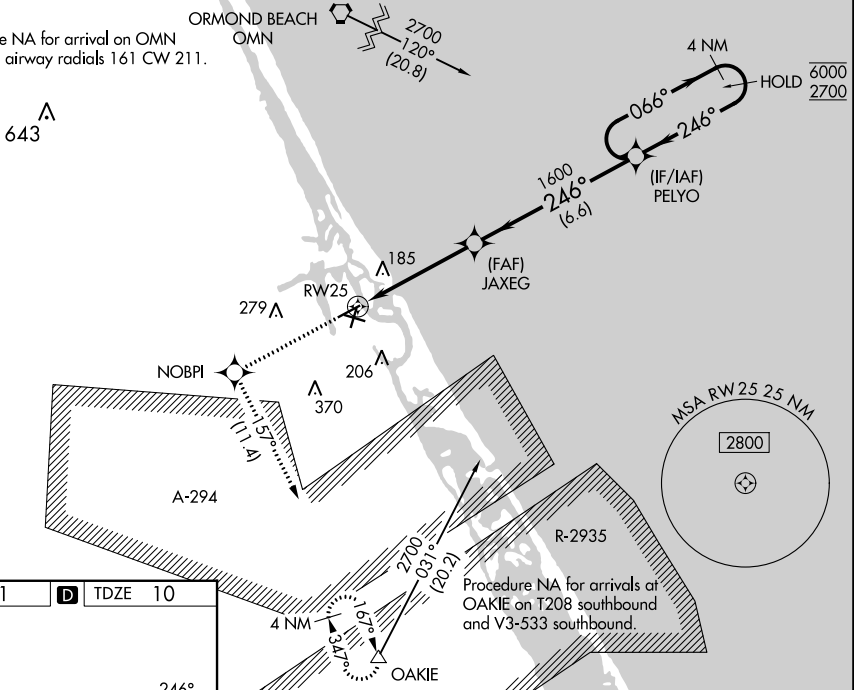
RNP APCH-GPS.

**▼** Rwy 25 helicopter visibility reduction below 1 SM NA. Straight-in Rwy 25 NA at night, Circling Rwy 7, 11, 25 NA at night. When local altimeter setting not received, use Daytona Beach altimeter setting increase LPV DA to 328 feet and all MDA 40 feet. Increase LNAV Cat C visibility 1/8 SM and Circling Cat C visibility 1/4 SM.

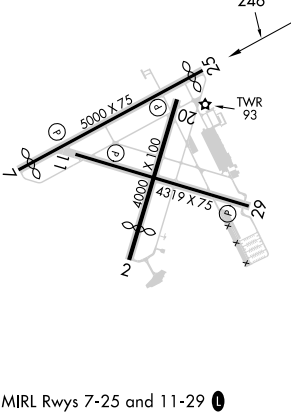
**MISSED APPROACH:** Climb to 4000 direct NOBPI and on track 157° to OAKIE and hold, continue climb-in-hold to 4000.

ATIS <b>124.625</b>	DAYTONA APP CON <b>125.35 322.3</b>	<b>NEW SMYRNA BEACH TOWER*</b> <b>119.675 (CTAF) 0</b>	GND CON <b>121.325</b>	UNICOM <b>122.95</b>
------------------------	--	---	---------------------------	-------------------------

Procedure NA for arrival on OMN  
VORTAC airway radials 161 CW 211.



ELEV 11	<b>D</b>	TDZE 10
---------	----------	---------



4000	NOBPI	tr 157°	OAKIE	VGSI and RNAV glidepath not coincident (VGSI Angle 3.00/TCH 46).	4 NM Holding Pattern
			JAXEG 1600	PELYO	066° → 6000 ← 246° 2700
	RW25		1600		GP 3.00° TCH 60
	4.7 NM		6.6 NM		

CATEGORY	A	B	C	D
LPV DA	303-1 293 (300-1)			NA
LNAV MDA	440-1	430 (500-1)	440-1 1/4 430 (500-1 1/4)	NA
<b>C</b> CIRCLING	440-1 429 (500-1)	520-1 509 (600-1)	680-1 3/4 669 (700-1 3/4)	NA

SE-3, 26 DEC 2024 to 23 JAN 2025

SE-3, 26 DEC 2024 to 23 JAN 2025