

BORRN SIX DEPARTURE (RNAV)

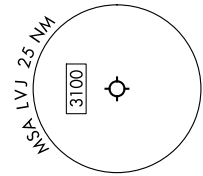
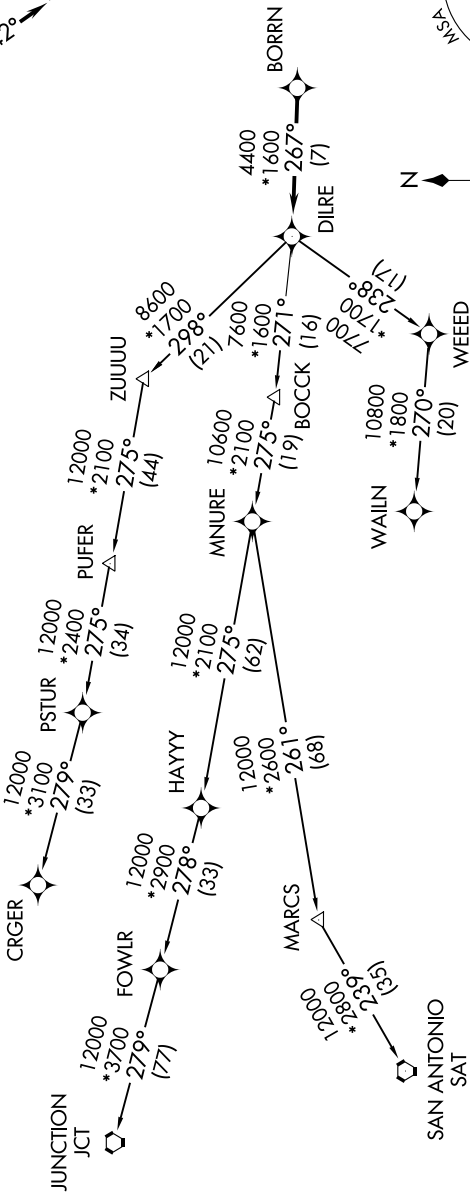
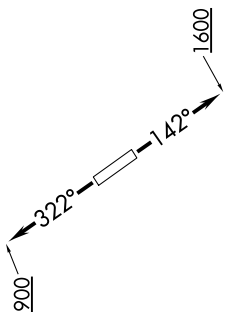
TOP ALTITUDE:
ASSIGNED BY ATC

RNAV 1 - DME/DME/IRU or GPS.
RADAR required.

TAKEOFF MINIMUMS
Rwys 14, 32: Standard with minimum
climb of 500'/NM to 560.

ASOS
118.525
CTAF
122.725
CLNC DEL
124.0

HOUSTON DEP CON
134.45 284.0



NOTE: Chart not to scale.

NOTE: CRGR-TRANSITION ATC assigned only
for aircraft departing 54T, AXH, EFD, GLS,
HPY, IWS, LBX, LVJ, SGR, TME, T00, T41.

(NARRATIVE ON FOLLOWING PAGE)

BORRN SIX DEPARTURE (RNAV)