

WAAS CH <b>63018</b> <b>W20A</b>	APP CRS <b>204°</b>	Rwy Idg TDZE <b>1259</b> Apt Elev <b>1265</b>
--	------------------------	---

# RNAV (GPS) RWY 20

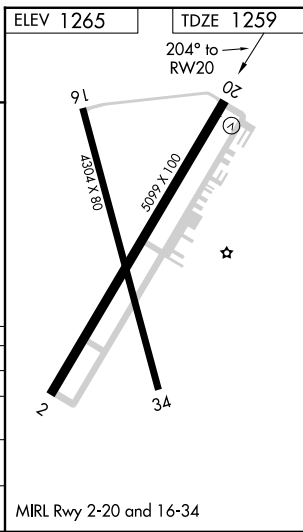
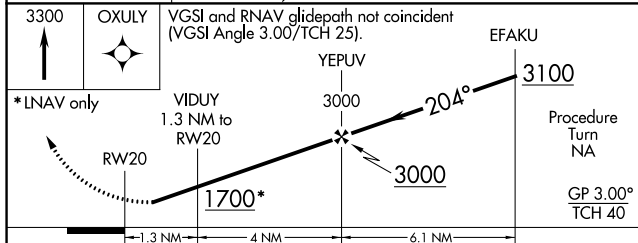
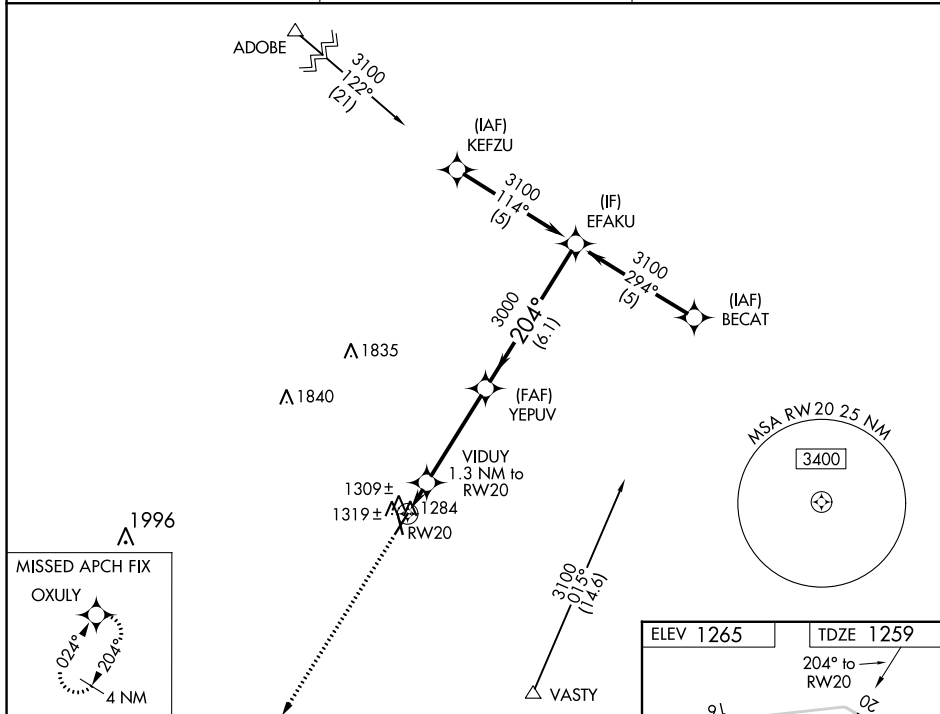
WILBARGER COUNTY (F05)

RNP APCH

**⚠** Baro-VNAV NA when using Frederick altimeter setting. For uncompensated Baro-VNAV systems, LNAV/VNAV NA below -17°C or above 54°C. Rwy 20 helicopter visibility reduction below 3/4 SM NA. When local altimeter setting not received, use Frederick altimeter setting: increase all DA/MDA 40 feet.

**MISSED APPROACH:**  
Climb to 3300 direct OXULY and hold.

AWOS-3 <b>118.525</b>	ALTUS APP CON* <b>125.1 353.7</b>	UNICOM <b>122.8 (CTAF) 0</b>
--------------------------	--------------------------------------	---------------------------------



CATEGORY	A	B	C	D
LPV DA	1509-1	250 (300-1)		NA
LNAV/VNAV DA	1585-1 1/4	326 (400-1 1/4)		NA
LNAV MDA	1580-1	321 (400-1)		NA
CIRCLING	1660-1 395 (400-1)	1720-1 455 (500-1)	1800-1 1/2 535 (600-1 1/2)	NA

SC-2, 26 DEC 2024 to 23 JAN 2025

SC-2, 26 DEC 2024 to 23 JAN 2025