

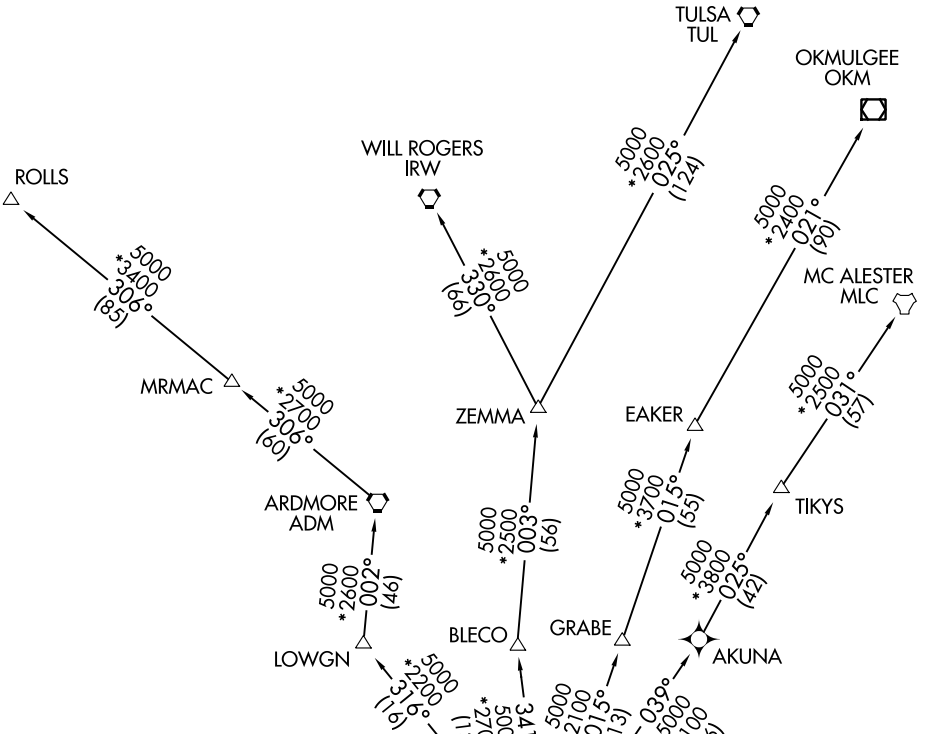
# NANDR TWO DEPARTURE (RNAV)

LONE STAR DEP CON  
135.975 379.9

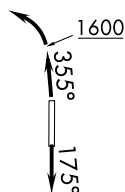
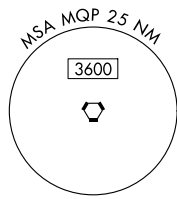
RNAV 1 - DME/DME/IRU or GPS.

RADAR required.

**TOP ALTITUDE:  
ASSIGNED BY ATC**



NOTE: EAKER Transition: For TUL terminal arrivals only.  
 NOTE: TULSA Transition: For all aircraft overflying TUL VORTAC.  
 NOTE: Aircraft arriving to the Oklahoma City terminal area, file and expect the ZEMMA enroute transition.



TAKEOFF MINIMUMS  
Rwys 17, 35: Standard.

(CONTINUED ON FOLLOWING PAGE)

SC-2, 26 DEC 2024 to 23 JAN 2025

SC-2, 26 DEC 2024 to 23 JAN 2025