

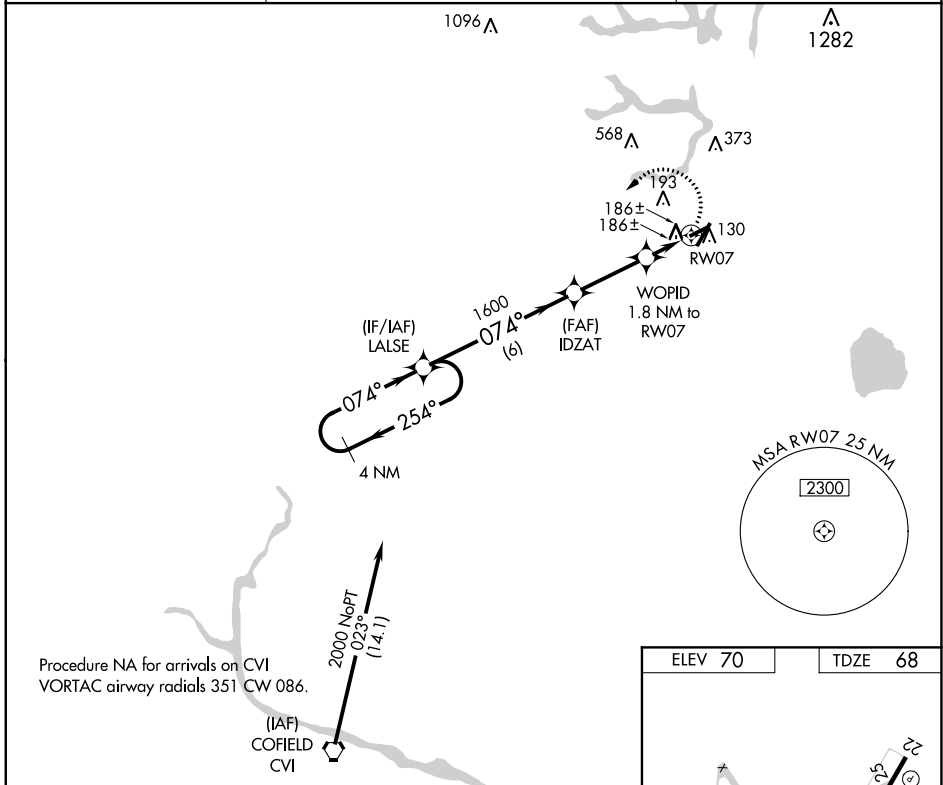
WAAS CH 78424 W07A	APP CRS 074°	Rwy Idg 3750 TDZE 68 Apt Elev 70
--	------------------------	---

RNAV (GPS) RWY 7

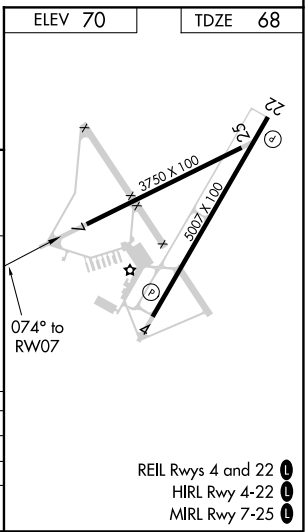
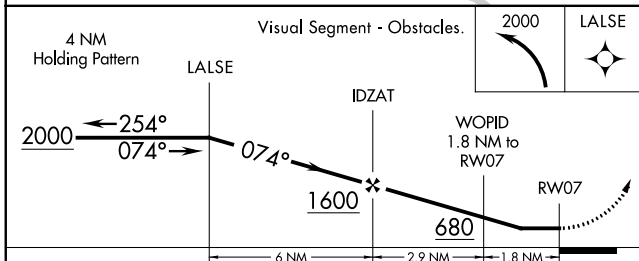
SUFFOLK EXEC (SF^Q)

<p>⚠ DME/DME RNP-0.3 NA. Helicopter visibility reduction below ¾ SM NA. When local altimeter setting not received, use Norfolk Intl altimeter setting and increase all MDA 60 feet.</p>	<p>MISSED APPROACH: Climbing left turn to 2000 direct LALSE and hold.</p>
--	--

AWOS-3 119.375	NORFOLK APP CON 127.9 269.425	UNICOM 122.7 (CTAF) 📶
--------------------------	---	--



Procedure NA for arrivals on CVI VORTAC airway radials 351 CW 086.



CATEGORY	A	B	C	D
LP MDA	480-1	412 (500-1)		NA
LNAY MDA	500-1	432 (500-1)		NA
C CIRCLING	500-1 430 (500-1)	560-1 490 (500-1)		NA

NE-3, 26 DEC 2024 to 23 JAN 2025

NE-3, 26 DEC 2024 to 23 JAN 2025