

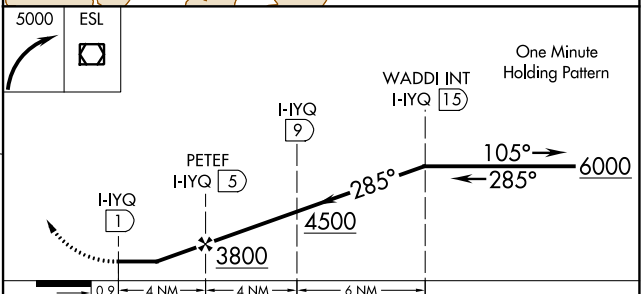
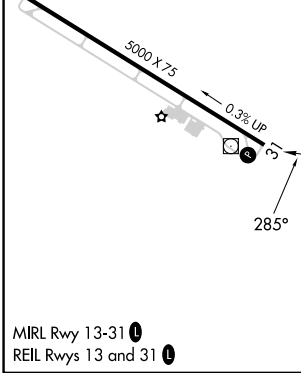
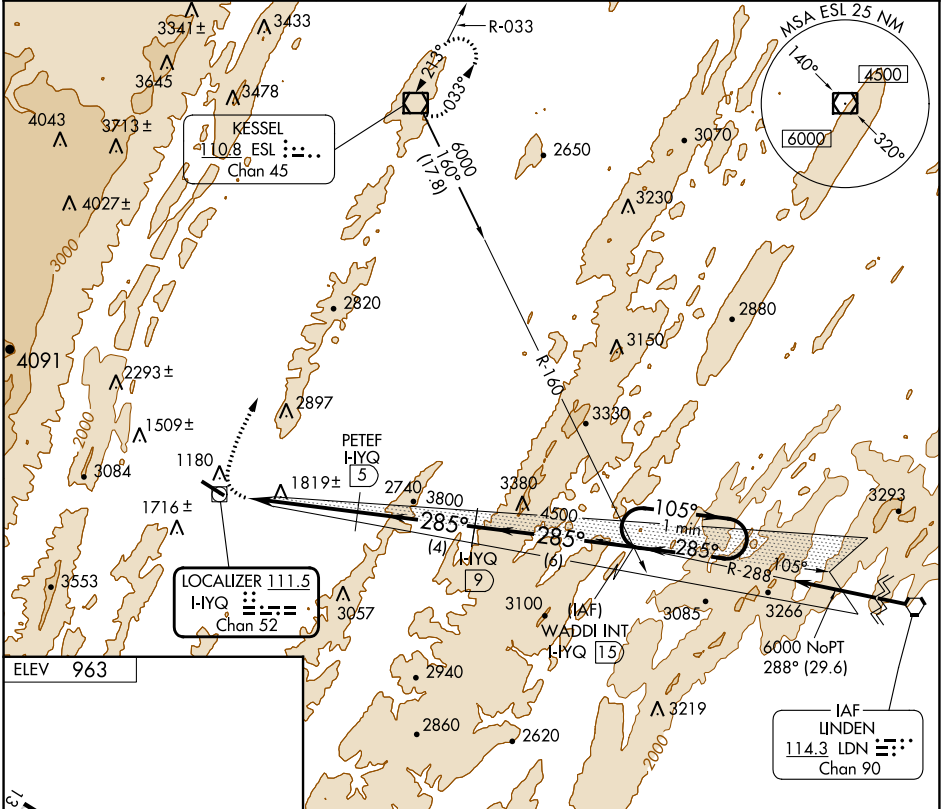
LOC HYQ 111.5 Chan 52	APP CRS 285°	Rwy Idg TDZE Apt Elev 963	N/A N/A 963
------------------------------------	------------------------	---	--

LDA/DME-B

GRANT COUNTY (W99)

MISSED APPROACH: Climbing right turn to 5000 direct ESL VOR/DME and hold.

AWOS-3 124.475	WASHINGTON CENTER 133.55 322.55	UNICOM 122.8 (CTAF) 0
--------------------------	---	---------------------------------



CATEGORY	A	B	C	D
C CIRCLING	2500-1¼ 1537 (1600-1¼)	2500-1½ 1537 (1600-1½)	2880-3 1917 (2000-3)	NA

NE-4, 26 DEC 2024 to 23 JAN 2025

NE-4, 26 DEC 2024 to 23 JAN 2025