

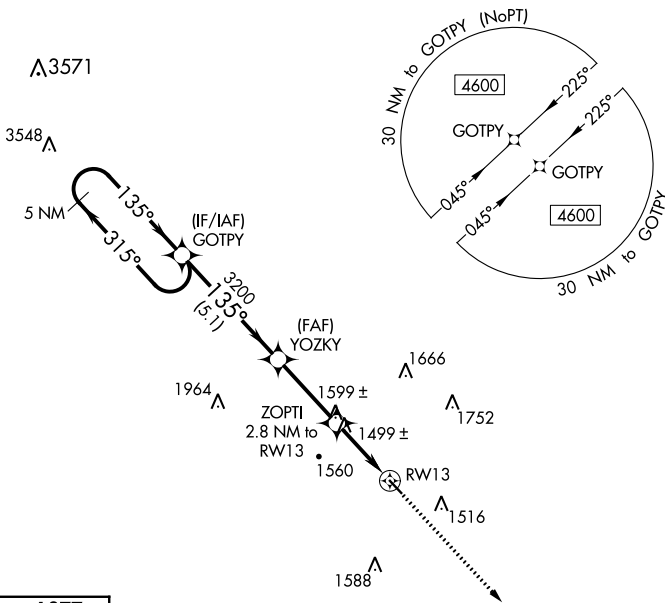
APP CRS	Rwy Idg	3634
135°	TDZE	1277
	Apt Elev	1311

RNAV (GPS) RWY 13

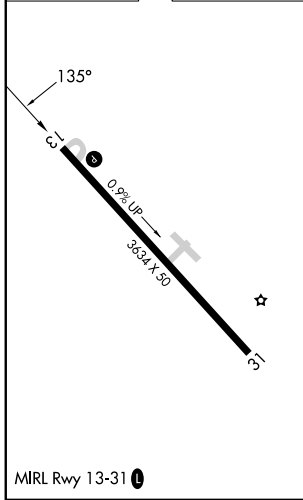
AVA BILL MARTIN MEML (AOV)

RNP APCH.	Procedure NA at night. Use Branson altimeter setting, if not received use Springfield Branson Natl altimeter setting and increase all MDA 20 feet. Rwy 13 helicopter visibility reduction below 1 SM NA.	MISSED APPROACH: Climb to 3500 direct GAHSU and hold.
⚠ NA		

BBG AWOS-3 124.625	SPRINGFIELD APP CON 126.35	UNICOM 122.7 (CTAF) 0
------------------------------	--------------------------------------	---------------------------------



ELEV 1311	TDZE 1277
-----------	-----------



5 NM Holding Pattern	GOTPY	VGSI and RNAV glidepath not coincident (VGSI Angle 3.00/TCH 43).	3500	GAHSU
4600	← 315°	→ 135°	735°	3200
			3.00° TCH 40	ZOPTI 2.8 NM to RW13
			2200	RW13
	5.1 NM	3.1 NM	2.8 NM	
CATEGORY	A	B	C	D
LNAV MDA	1840-1	563 (600-1)		NA

NC-3, 26 DEC 2024 to 23 JAN 2025

NC-3, 26 DEC 2024 to 23 JAN 2025