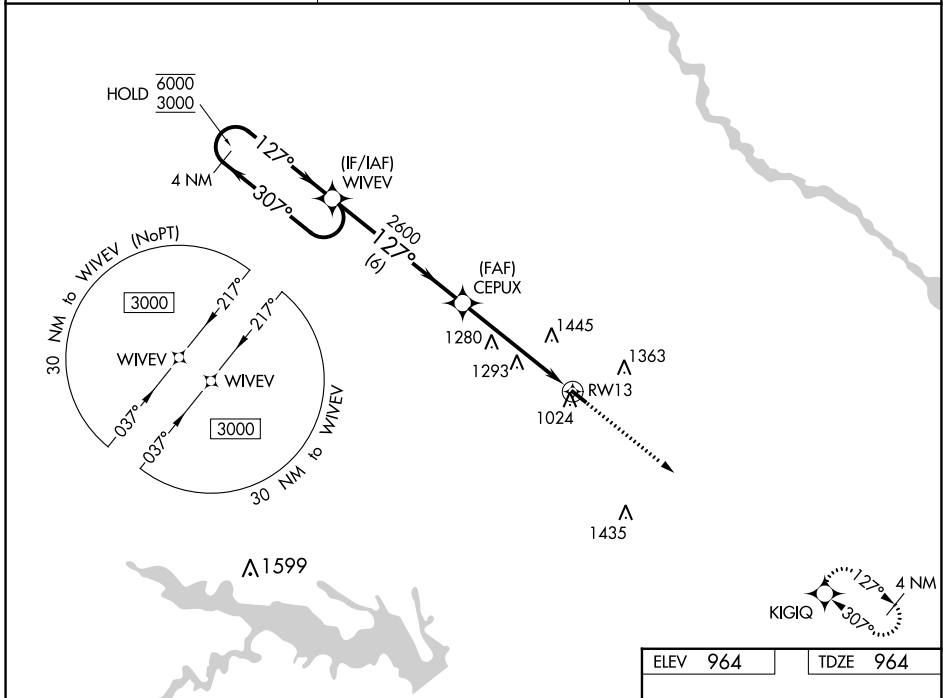


|  |                        |                             |   |
|--|------------------------|-----------------------------|---|
| WAAS<br>CH <b>50533</b><br><b>W13A</b> | APP CRS<br><b>127°</b> | Rwy Idg<br>TDZE<br>Apt Elev | <b>3398</b><br><b>964</b><br><b>964</b> |
|--|------------------------|-----------------------------|---|

# RNAV (GPS) RWY 13

ALBIA MUNI (4C8)

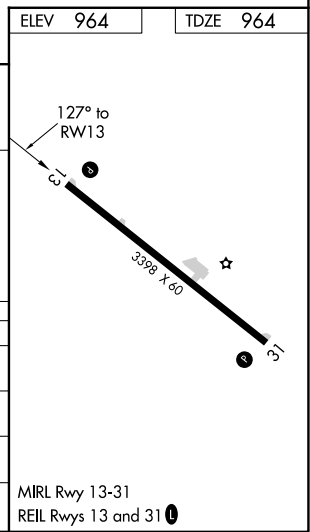
|   |   |   |
|---|---|---|
| RNP APCH.   |   | MISSED APPROACH: Climb to 3000 direct KIGIQ and hold. |
| <p><b>▼</b> Rwy 13 helicopter visibility reduction below 3/4 SM NA. Baro-VNAV NA. Use <b>▲ NA</b> Ottumwa altimeter setting, when not received use Centerville altimeter setting.</p> |   |   |
| OTM ASOS<br><b>124.175</b>  | CHICAGO CENTER<br><b>118.15 335.575</b> | UNICOM<br><b>122.8 (CTAF) 0</b>                       |



NC-3, 26 DEC 2024 to 23 JAN 2025

NC-3, 26 DEC 2024 to 23 JAN 2025

|                      |                       |                       |       |        |       |
|----------------------|-----------------------|-----------------------|-------|--------|-------|
| 4 NM Holding Pattern |                       | WIVEV                 | CEPUX | 3000   | KIGIQ |
| 6000                 | ← 307°                | 127°                  | 2600  | ↑      | ◆     |
| 3000                 | → 127°                |                       |       |        |       |
| GP 3.00°<br>TCH 30   |                       | 6 NM                  |       | 5.1 NM |       |
| CATEGORY             | A                     | B                     | C     | D      |       |
| LPV DA               | 1268-1                | 304 (400-1)           |       |        | NA    |
| RNAV/VNAV DA         | 1291-1 1/8            | 327 (400-1 1/8)       |       |        | NA    |
| RNAV MDA             | 1600-1                | 636 (700-1)           |       |        | NA    |
| <b>ⓐ</b> CIRCLING    | 1600-1<br>636 (700-1) | 1760-1<br>796 (800-1) |       |        | NA    |



MIRL Rwy 13-31  
REIL Rws 13 and 31 **0**