

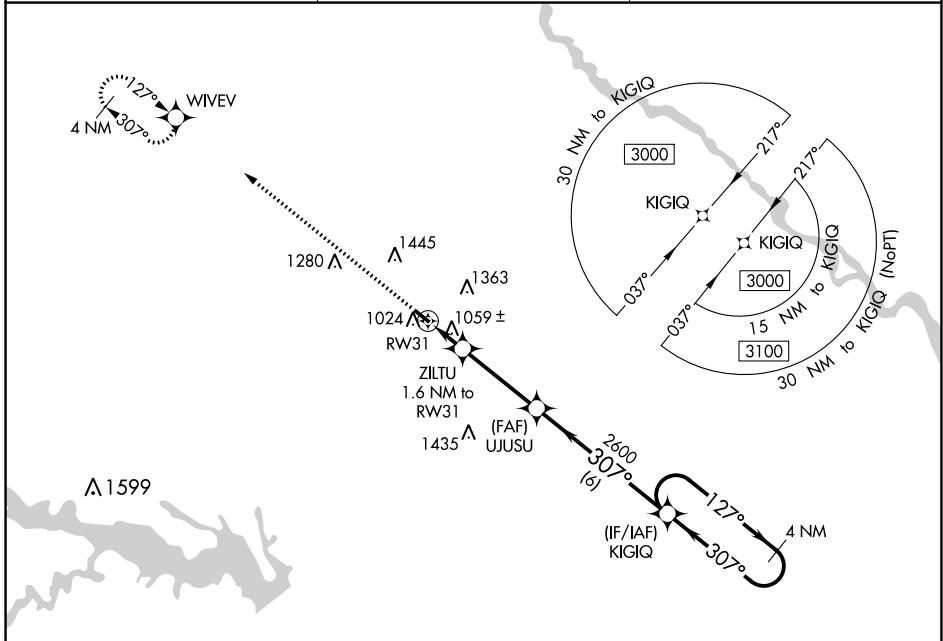
WAAS CH <b>66033</b> W31A	APP CRS <b>307°</b>	Rwy Idg TDZE Apt Elev	<b>3398</b> <b>964</b> <b>964</b>
---------------------------------	------------------------	-----------------------------	---

# RNAV (GPS) RWY 31

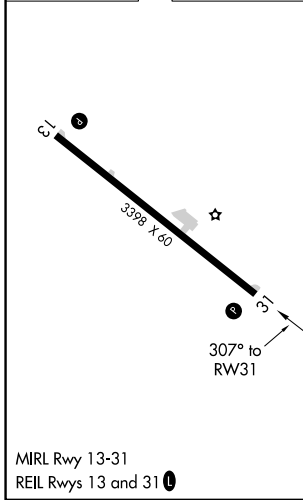
ALBIA MUNI (4C8)

<p><b>▽</b> DME/DME RNP-0.3 NA. Use Ottumwa altimeter setting, when not received use Centerville altimeter setting. Helicopter visibility reduction below ¾ SM NA. Baro-VNAV NA.</p> <p><b>△</b> NA</p>	<p>MISSED APPROACH: Climb to 3000 direct WIVEV and hold.</p>
---	--

OTM ASOS <b>124.175</b>	CHICAGO CENTER <b>118.15 335.575</b>	UNICOM <b>122.8 (CTAF) 0</b>
----------------------------	---	---------------------------------



ELEV 964	TDZE 964
----------	----------



3000	WIVEV	VGSI and RNAV glidepath not coincident (VGSI Angle 3.00/TCH 30).	4 NM Holding Pattern																									
* LNAV only	ZILTU 1.6 NM to RW31	UJUSU 2600	KIGIQ																									
RW31	1500*	2600	3000																									
	1.6 NM	3.4 NM	6 NM																									
GP 3.00° TCH 40																												
<table border="1"> <thead> <tr> <th>CATEGORY</th> <th>A</th> <th>B</th> <th>C</th> <th>D</th> </tr> </thead> <tbody> <tr> <td>LPV DA</td> <td>1268-1</td> <td>304 (400-1)</td> <td></td> <td>NA</td> </tr> <tr> <td>LNAV/VNAV DA</td> <td>1314-1½</td> <td>350 (400-1½)</td> <td></td> <td>NA</td> </tr> <tr> <td>LNAV MDA</td> <td>1380-1</td> <td>416 (500-1)</td> <td></td> <td>NA</td> </tr> <tr> <td><b>C</b> CIRCLING</td> <td>1440-1 476 (500-1)</td> <td>1760-1 796 (800-1)</td> <td></td> <td>NA</td> </tr> </tbody> </table>	CATEGORY	A	B	C	D	LPV DA	1268-1	304 (400-1)		NA	LNAV/VNAV DA	1314-1½	350 (400-1½)		NA	LNAV MDA	1380-1	416 (500-1)		NA	<b>C</b> CIRCLING	1440-1 476 (500-1)	1760-1 796 (800-1)		NA			
CATEGORY	A	B	C	D																								
LPV DA	1268-1	304 (400-1)		NA																								
LNAV/VNAV DA	1314-1½	350 (400-1½)		NA																								
LNAV MDA	1380-1	416 (500-1)		NA																								
<b>C</b> CIRCLING	1440-1 476 (500-1)	1760-1 796 (800-1)		NA																								

ALBIA, IOWA  
MIRL Rwy 13-31  
REIL Rwy 13 and 31 0

41°00'N-92°46'W

# RNAV (GPS) RWY 31

NC-3, 26 DEC 2024 to 23 JAN 2025

NC-3, 26 DEC 2024 to 23 JAN 2025