

WAAS CH 90524 W13A	APP CRS 125°	Rwy Idg 4000 TDZE 264 Apt Elev 264
--	------------------------	---

RNAV (GPS) RWY 13

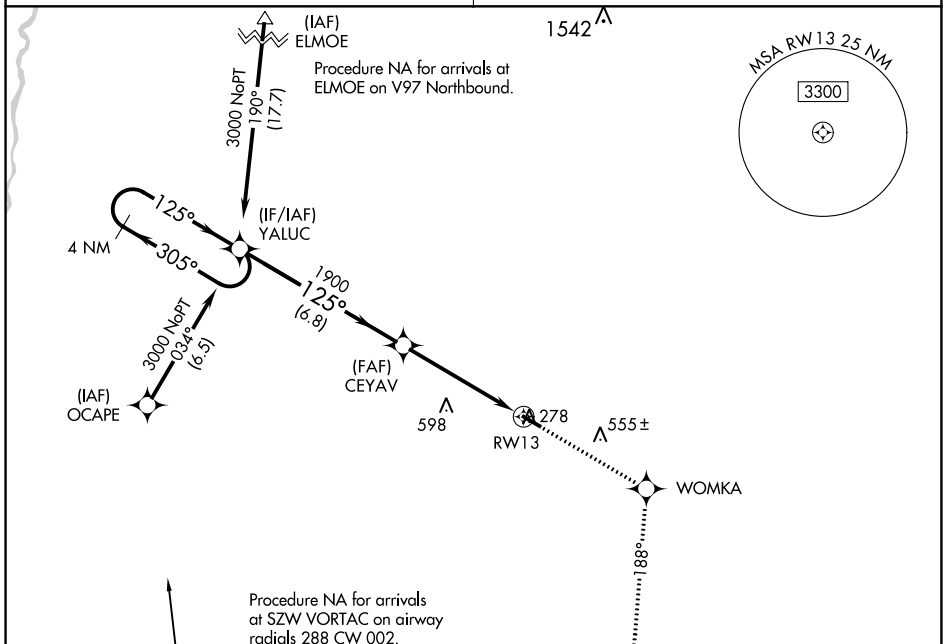
CAIRO-GRADY COUNTY (70J)

▽ DME/DME RNP-0.3 NA. Helicopter visibility reduction below 1 SM NA. Use Moultrie altimeter setting, when not received, use Tallahassee Intl altimeter setting and increase all MDA 60 feet; increase LP and LNAV Cats C/D visibility 1/8 SM and increase Circling Cats C/D visibility 1/4 SM. Night landing: Rwy 13 NA.

▲ NA MISSED APPROACH: Climb to 3000 direct WOMKA and on track 188° to LLOYD and hold.

TALLAHASSEE APP CON*
128.7 254.3

UNICOM
122.7 (CTAF)



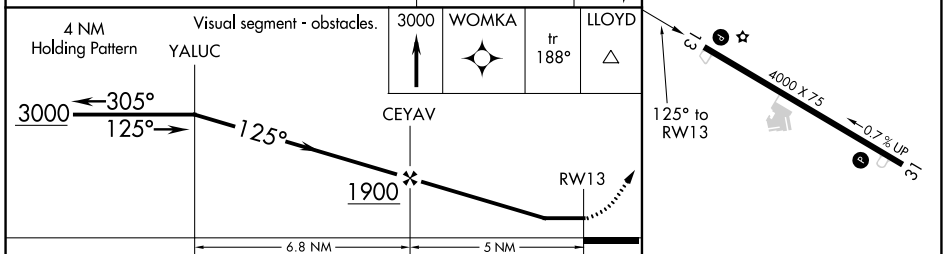
SE-4, 26 DEC 2024 to 23 JAN 2025

SE-4, 26 DEC 2024 to 23 JAN 2025

ELEV 264	TDZE 264
----------	----------

MISSED APCH FIX
4 NM
088°
268°
LLOYD

SEMINOLE SZW
3000
357°
(20.6)



CATEGORY	A	B	C	D
LP MDA	860-1	596 (600-1)	860-1 ³ / ₄	596 (600-1 ³ / ₄)
LNAV MDA	860-1	596 (600-1)	860-1 ³ / ₄	596 (600-1 ³ / ₄)
CIRCLING	860-1	596 (600-1)	1020-2 ¹ / ₄ 756 (800-2 ¹ / ₄)	1020-2 ¹ / ₂ 756 (800-2 ¹ / ₂)

MIRL Rwy 13-31