

WAAS CH <b>63009</b> <b>W24A</b>	APP CRS <b>240°</b>	Rwy Idg <b>5501</b> TDZE <b>523</b> Apt Elev <b>526</b>
--	------------------------	---

# RNAV (GPS) RWY 24

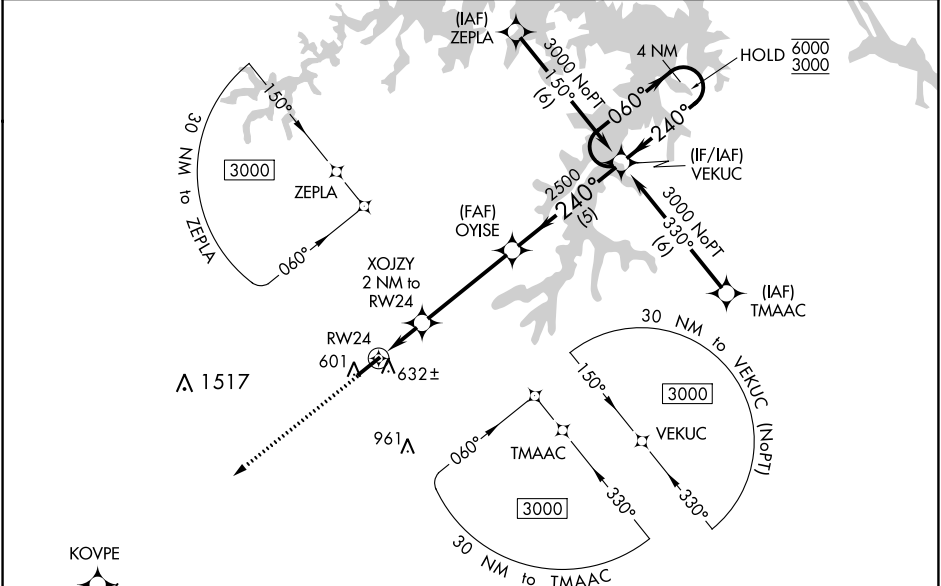
HENDERSON/OXFORD (HNZ)

RNP APCH - GPS.

▼ For uncompensated Baro-VNAV systems, LNAV/VNAV NA below -16°C or above 54°C. Baro-VNAV and VDP NA when using Roxboro altimeter setting. Rwy 24 helicopter visibility reduction below 3/4 SM NA. When local altimeter setting not received, use Roxboro altimeter setting and increase LPV DA to 837 feet and all visibilities 1/2 SM; increase LNAV/VNAV DA to 877 feet and all visibilities 1/2 SM; increase all MDAs 80 feet and LNAV visibility Cat C/D 3/8 SM, and Circling visibility Cat C/D 1/2 SM.

MISSED APPROACH:  
Climb to 3000 direct KOVPE and hold.

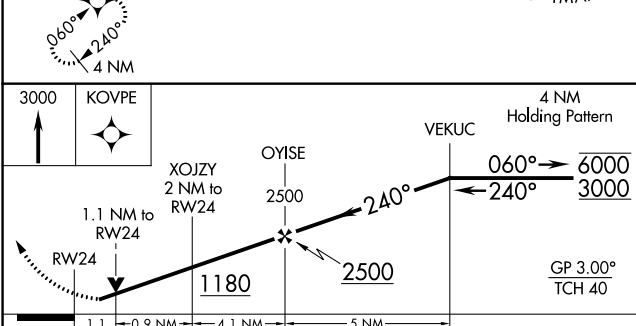
AWOS-3 <b>118.625</b>	RALEIGH APP CON <b>132.35 256.9</b>	UNICOM <b>122.8(CTAF)</b>
--------------------------	--	------------------------------



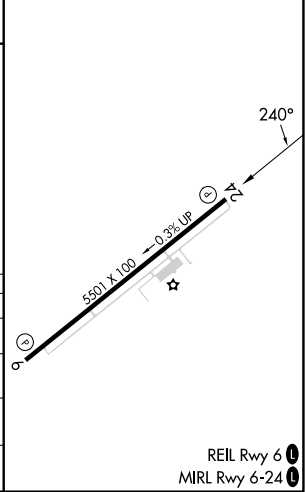
SE-2, 26 DEC 2024 to 23 JAN 2025

SE-2, 26 DEC 2024 to 23 JAN 2025

ELEV 526	TDZE 523
----------	----------



CATEGORY	A	B	C	D
LPV DA		773-3/4	250 (300-3/4)	
LNAV/VNAV DA		813-7/8	290 (300-7/8)	
LNAV MDA		900-1	377 (400-1)	
CIRCLING	960-1	980-1	1100-1 1/2	1280-2 1/2
	434 (500-1)	454 (500-1)	574 (600-1 1/2)	754 (800-2 1/2)



REIL Rwy 6  
MIRL Rwy 6-24