

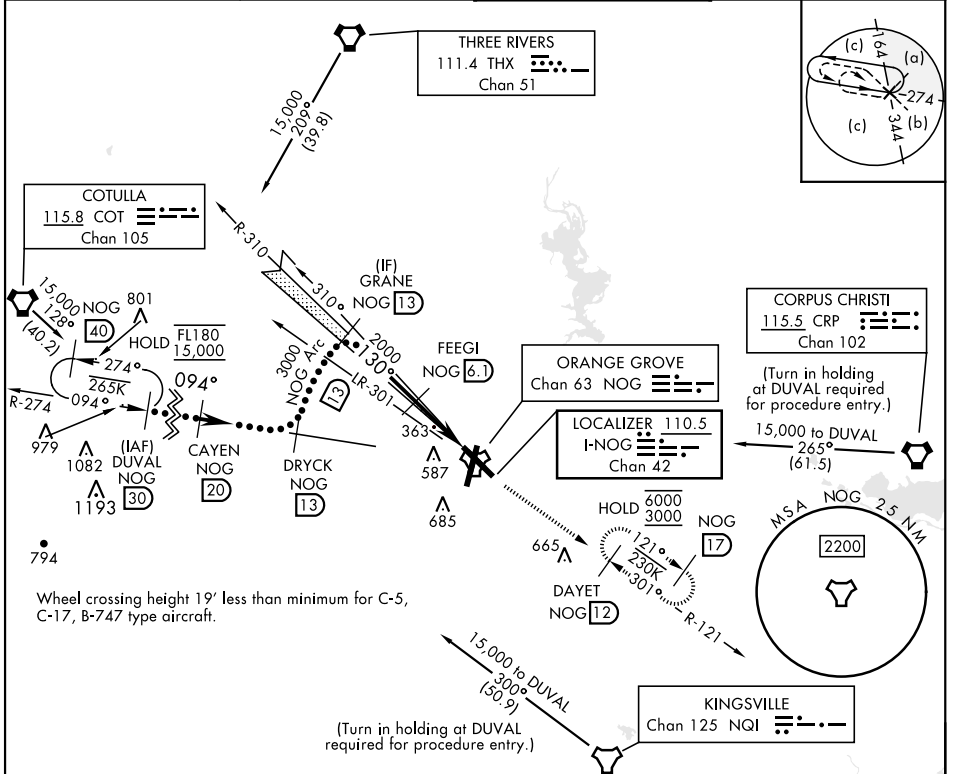
# HI-ILS W or LOC W RWY 13

LOCDME I-NOG <b>110.5</b> Chan 42	APCH CRS <b>130°</b>	Rwy Idg TDZE Arprt Elev <b>8001</b> <b>257</b> <b>257</b>	[USN]	ORANGE GROVE NALF (KNOG)
---	-------------------------	--	-------	--------------------------

TACAN required

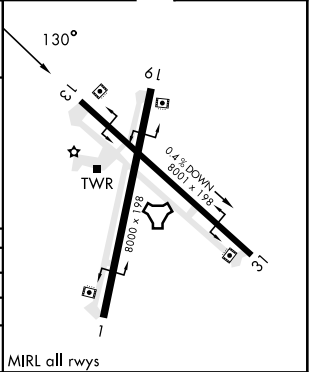
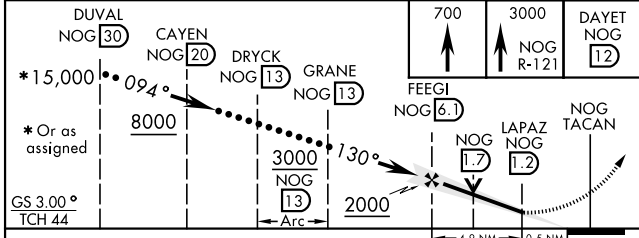
MISSED APPROACH: Climb to 700 then climbing to 3000 intercept NOG TACAN R-121 to DAYET and hold.

ATIS ★ <b>254.35</b>	KINGSVILLE APP CON <b>119.90 290.45</b>	TOWER ★ <b>128.4 281.425</b>	GND CON <b>229.4</b>
-------------------------	--	---------------------------------	-------------------------



EMERG SAFE ALT 100 NM 16,200

ELEV	257	TDZE	257
------	-----	------	-----



CATEGORY	C	D	E
S-ILS 13	457-1	200 (200-1)	
S-LOC 13	620-1	363 (400-1)	
CIRCLING	920-1¾ 663 (700-1¾)	1000-2½ 743 (800-2½)	1000-2¾ 743 (800-2¾)

# HI-ILS W or LOC W RWY 13

SC-3, 26 DEC 2024 to 23 JAN 2025

SC-3, 26 DEC 2024 to 23 JAN 2025