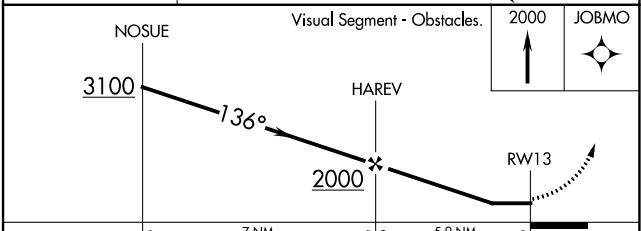
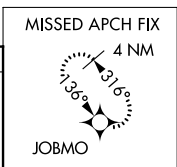
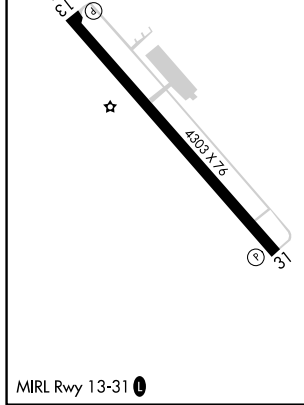
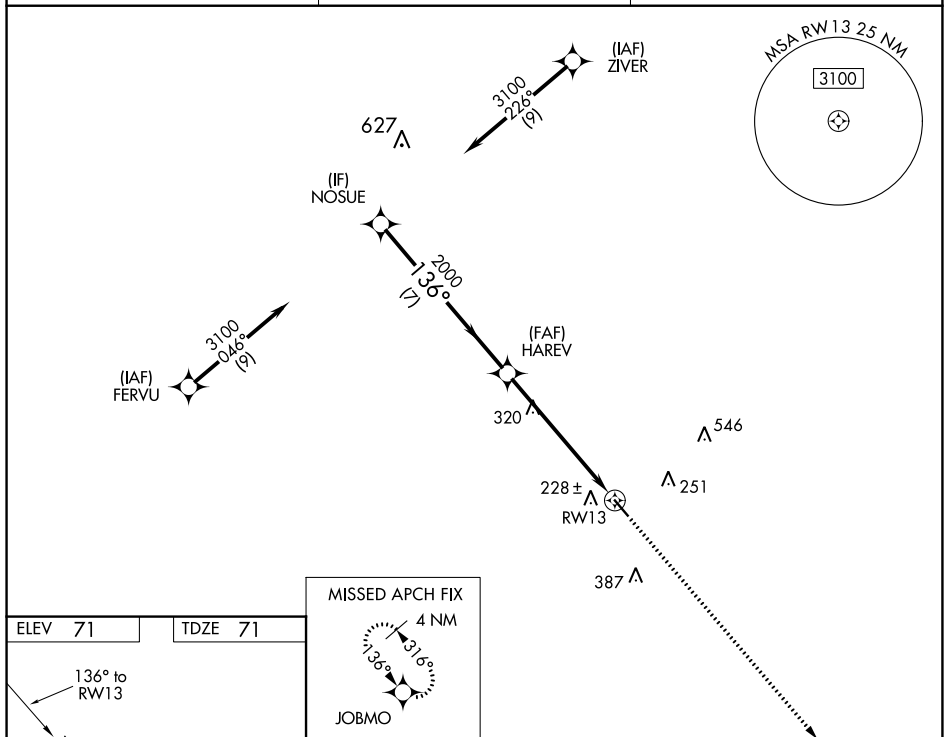


WAAS CH <b>58242</b> <b>W13A</b>	APP CRS <b>136°</b>	Rwy Idg <b>4303</b> TDZE <b>71</b> Apt Elev <b>71</b>
--	------------------------	---

# RNAV (GPS) RWY 13

HAWTHORNE FLD (45R)

RNP APCH-GPS.		MISSED APPROACH: Climb to 2000 direct JOBMO and hold.
<p><b>▽</b> Procedure NA at night. Rwy 13 helicopter visibility reduction below 1 SM NA. Use Beaumont/Port Arthur altimeter setting; when not received use Orange altimeter setting.</p> <p><b>△</b> NA</p>		
BPT ASOS <b>126.3</b>	HOUSTON APP CON <b>121.3 377.1</b>	UNICOM <b>122.8 (CTAF) 0</b>



CATEGORY	A	B	C	D
LP MDA	700-1	629 (700-1)	700-1 <sup>3</sup> / <sub>4</sub> 629 (700-1 <sup>3</sup> / <sub>4</sub> )	NA
LNAV MDA	720-1	649 (700-1)	720-1 <sup>7</sup> / <sub>8</sub> 649 (700-1 <sup>7</sup> / <sub>8</sub> )	NA
CIRCLING	720-1	649 (700-1)	880-2 <sup>1</sup> / <sub>4</sub> 809 (900-2 <sup>1</sup> / <sub>4</sub> )	NA

SC-5, 26 DEC 2024 to 23 JAN 2025

SC-5, 26 DEC 2024 to 23 JAN 2025