

WAAS CH <b>40218</b> <b>W36A</b>	APP CRS <b>360°</b>	Rwy Idg <b>5001</b> TDZE <b>1003</b> Apt Elev <b>1003</b>
----------------------------------------	------------------------	-----------------------------------------------------------------

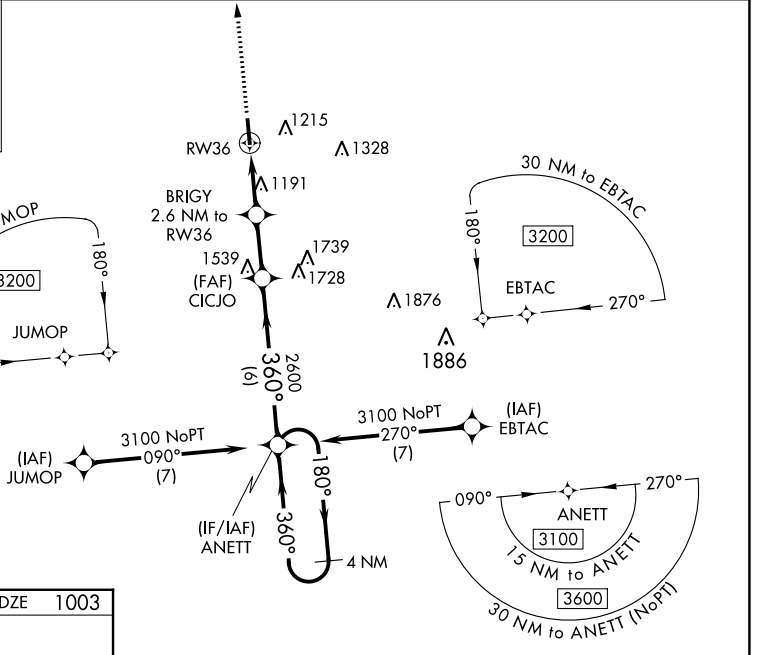
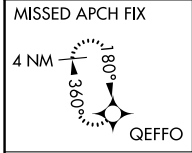
# RNAV (GPS) RWY 36

CENTRAL KENTUCKY RGNL (R.G.A)

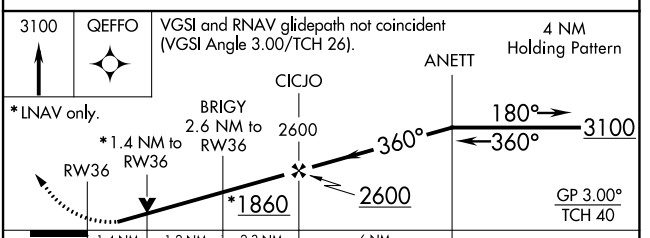
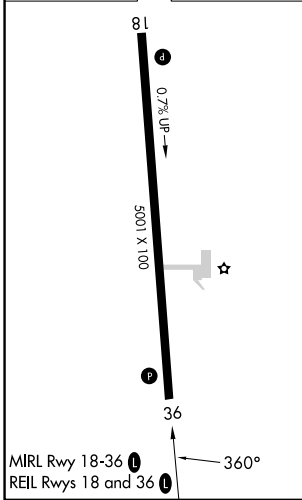
**⚠** For uncompensated Baro-VNAV systems, LNAV/VNAV NA below -16°C (4°F) or above 54°C (130°F). DME/DME RNP-0.3 NA. When local altimeter setting not received, use Lexington altimeter setting and increase LPV DA to 1331 feet, LNAV/VNAV DA to 1345 feet and all MDA 80 feet; increase LPV all Cats and LNAV/VNAV all Cats visibility ¼ mile; increase LNAV Cats C and D ½ mile and Circling visibility Cat D ¼ mile. Helicopter visibility reduction below ¼ SM NA. VDP and Baro-VNAV NA when using Lexington altimeter setting.

**MISSED APPROACH:** Climb to 3100 direct QEFFO and hold.

AWOS-3 <b>119.625</b>	LEXINGTON APP CON <b>120.15 259.3</b>	UNICOM <b>122.725 (CTAF) 0</b>
--------------------------	------------------------------------------	-----------------------------------



ELEV 1003	TDZE 1003
-----------	-----------



CATEGORY	A	B	C	D
LPV DA		1264-7/8	261 (300-7/8)	
LNAV/VNAV DA		1278-7/8	275 (300-7/8)	
LNAV MDA	1460-1	457 (500-1)	1460-1 3/8	457 (500-1 3/8)
<b>C</b> CIRCLING	1460-1 457 (500-1)	1520-1 517 (600-1)	1520-1 1/2 517 (600-1 1/2)	1780-2 1/2 777 (800-2 1/2)

SE-1, 26 DEC 2024 to 23 JAN 2025

SE-1, 26 DEC 2024 to 23 JAN 2025