

(DAWNN1.DAWNN) 23334
DAWNN ONE DEPARTURE

AL-6614 (FAA)

INDY SOUTH GREENWOOD (HFY)
 INDIANAPOLIS, INDIANA

AWOS-3P
 118.525
 INDIANAPOLIS DEP CON
 124.95 317.8

**TOP ALTITUDE:
 ASSIGNED BY ATC**

BRICKYARD
 116.3 VHP
 Chan 110

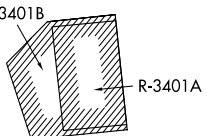
TERRE HAUTE
 115.3 TTH
 Chan 100

HOOSIER
 110.2 OOM
 Chan 39

SNEVA
 RADAR

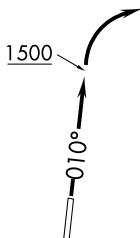
FOYTT
 RADAR

DAWNN
 10000
 (For LOUISVILLE Transition)

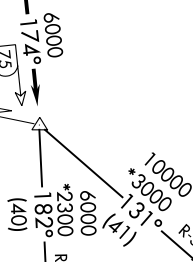


LOUISVILLE
 114.8 IU
 Chan 95

MYSTIC
 108.2 MYS



TAKEOFF MINIMUMS:
 Rwy 1: Standard.
 Rwy 19: 300-1 or standard with minimum
 climb of 484' per NM to 1200.



- NOTE: RADAR required.
- NOTE: Select appropriate localizer/DME frequency/channel prior to departure.
- NOTE: Turbojets accelerate to 250K until reaching 10000, if unable advise ATC.
- NOTE: Assigned to aircraft with a requested altitude of 11000 or above.

(NARRATIVE ON FOLLOWING PAGE)

NOTE: Chart not to scale.

EC-2, 26 DEC 2024 to 23 JAN 2025

EC-2, 26 DEC 2024 to 23 JAN 2025