

SW-4, 26 DEC 2024 to 23 JAN 2025

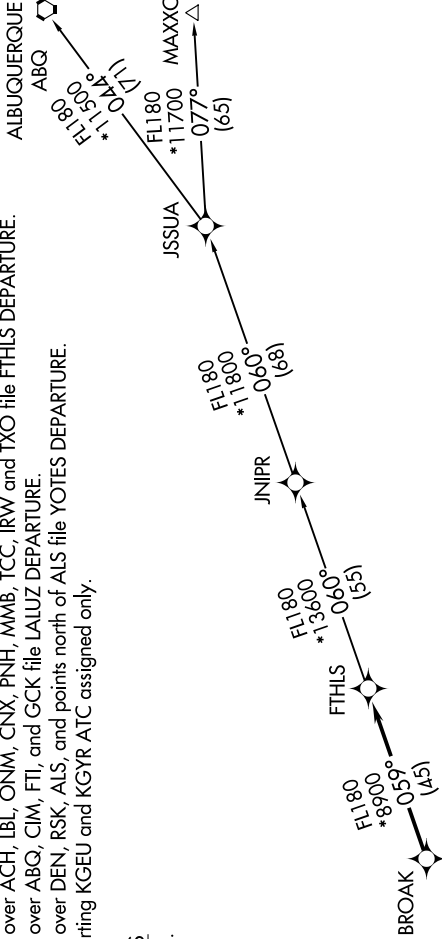
ATIS
118.35
GND CON
121.7
GOODYEAR TOWER ★
120.1 239.3
LUKE DEP CON ★
125.45 263.125
PHOENIX DEP CON
120.7 239.0

NOTE: RNAV 1.
NOTE: Turbojets and turboprops only.
NOTE: RADAR required.
NOTE: GPS required.
NOTE: ABQ transition ATC assigned only.

NOTE: Aircraft filing over ACH, LBL, ONM, CNX, PNH, MMB, TCC, IRW, and TXO file FTHLS DEPARTURE.
NOTE: Aircraft filing over ABQ, CIM, FTI, and GCK file LALUZ DEPARTURE.
NOTE: Aircraft filing over DEN, RSK, ALS, and points north of ALS file YOTES DEPARTURE.
NOTE: Aircraft departing KGEU and KGYR ATC assigned only.

TAKEOFF MINIMUMS
Rwys 3, 21 : Standard.

**TOP ALTITUDE:
ASSIGNED BY ATC**



DEPARTURE ROUTE DESCRIPTION

TAKEOFF RUNWAY 3: Climb heading 028° or as assigned by ATC, thence, . . .
TAKEOFF RUNWAY 21: Climb heading 228° or as assigned by ATC, thence, . . .
. . . expect RADAR vectors to BROAK, then on track 059° to FTHLS, then on (transition).
Maintain ATC assigned altitude, expect filed altitude 3 minutes after departure.

ALBUQUERQUE TRANSITION (FTHLS6.ABQ)
JNIPR TRANSITION (FTHLS6.JNIPR)
MAXXO TRANSITION (FTHLS6.MAXXO)

NOTE: Chart not to scale.

SW-4, 26 DEC 2024 to 23 JAN 2025