

WAAS CH 97405 W19A	APP CRS 187°	Rwy Idg TDZE 1497 Apt Elev 1497	5220
--	------------------------	---	-------------

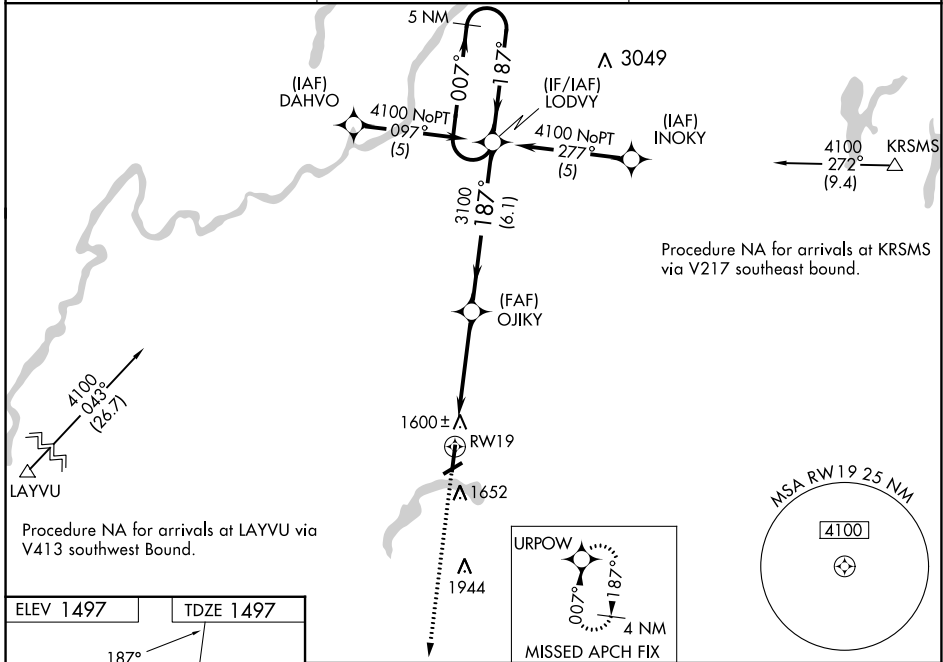
RNAV (GPS) RWY 19

PRICE COUNTY (PBH)

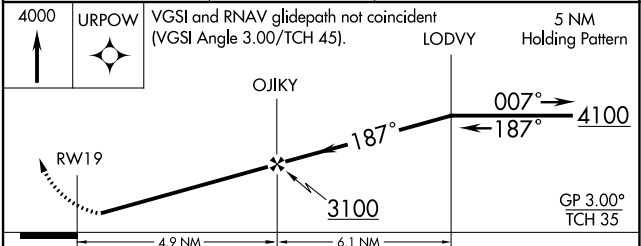
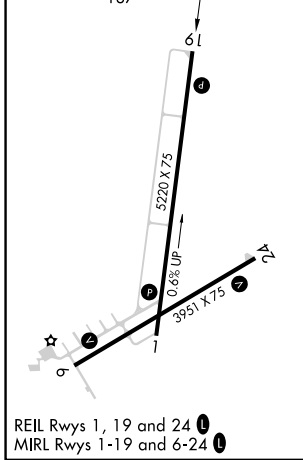
⚠ Baro-VNAV NA when using Minocqua-Woodruff altimeter setting. When local altimeter setting not received, use Minocqua-Woodruff altimeter setting and increase all DA 91 feet and all Cats visibility $\frac{3}{8}$ mile, increase all MDA 100 feet and all Cats C and D visibility $\frac{1}{4}$ mile. For uncompensated Baro-VNAV systems, LNAV/VNAV NA below -17°C (2°F) or above 34°C (93°F). DME/DME RNP-0.3 NA. Helicopter visibility reduction below $\frac{3}{4}$ SM NA. Night landing: Rwy 6, 24 NA.

⚠ MISSED APPROACH: Climb to 4000 direct URPOW and hold.

AWOS-3 125.875	MINNEAPOLIS CENTER 133.65 281.5	UNICOM 122.8 (CTAF) 0
--------------------------	---	---------------------------------



ELEV 1497	TDZE 1497
-----------	-----------



CATEGORY	A	B	C	D
LPV DA		1843-1 $\frac{1}{8}$	346 (400-1 $\frac{1}{8}$)	
LNAV/VNAV DA		1886-1 $\frac{3}{8}$	389 (400-1 $\frac{3}{8}$)	
LNAV MDA	1920-1	423 (500-1)	1920-1 $\frac{1}{4}$	423 (500-1 $\frac{1}{4}$)
CIRCLING	2100-1	603 (700-1)	2100-1 $\frac{3}{4}$ 603 (700-1 $\frac{3}{4}$)	2260-2 $\frac{1}{2}$ 763 (800-2 $\frac{1}{2}$)

EC-3, 26 DEC 2024 to 23 JAN 2025

EC-3, 26 DEC 2024 to 23 JAN 2025