

| | | | |
|--|------------------------|-----------------------------|---|
| WAAS CH 90341 W36A | APP CRS 359° | Rwy Idg TDZE Apt Elev | 5500 979 979 |
|--|------------------------|-----------------------------|---|

RNAV (GPS) RWY 36

JAMES H CONNELL FLD AT INDEPENDENCE MUNI (IIB)

RNP APCH.

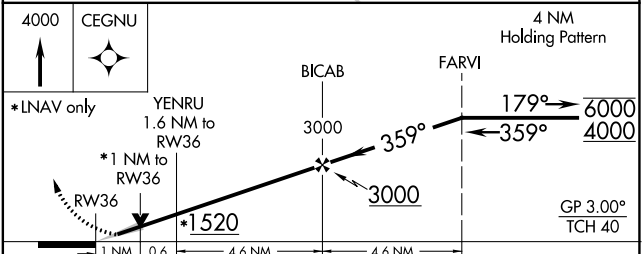
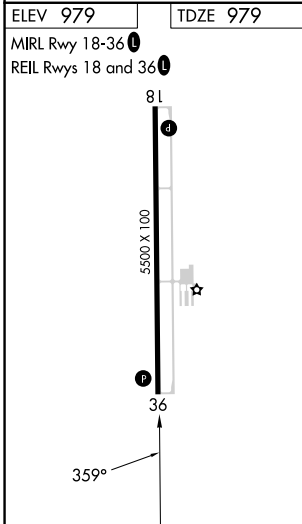
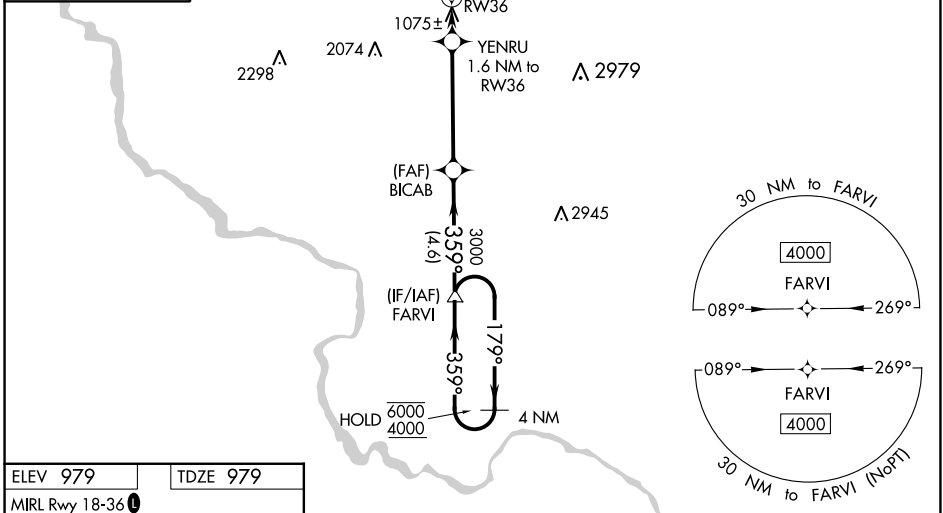
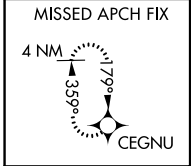
▼
▲ For uncompensated Baro-VNAV systems, LNAV/VNAV NA below -16°C or above 54°C.

MISSED APPROACH: Climb to 4000 direct CEGNU and hold, continue climb-in-hold to 4000.

AWOS-3
120.825

WATERLOO APP CON ★
118.9 251.15

UNICOM
122.8 (CTAF) 0



| CATEGORY | A | B | C | D |
|-------------------|--------|-------------|-----------------------|-------------------------|
| LPV DA | | 1229-3/4 | 250 (300-3/4) | |
| LNAV/VNAV DA | | 1236-7/8 | 257 (300-7/8) | |
| LNAV MDA | | 1340-1 | 361 (400-1) | |
| C CIRCLING | 1500-1 | 521 (600-1) | 1700-2 721 (800-2) | 2440-3 1461 (1500-3) |

NC-3, 26 DEC 2024 to 23 JAN 2025

NC-3, 26 DEC 2024 to 23 JAN 2025