

|                        |                             |   |
|------------------------|-----------------------------|---|
| APP CRS<br><b>178°</b> | Rwy Idg<br>TDZE<br>Apt Elev | <b>4805</b><br><b>779</b><br><b>779</b> |
|------------------------|-----------------------------|---|

# RNAV (GPS) RWY 18

MARSHALL MEML MUNI (MHL)

RNP APCH.

**▼** Rwy 18 helicopter visibility reduction below 3/4 SM NA. VDP NA when using Sedalia altimeter setting. Circling Rwy 9 and 27 NA. When local altimeter setting not received, use Sedalia altimeter setting and increase all MDAs 80 feet.

MISSED APPROACH: Climb to 3000 direct GOCOL and hold.

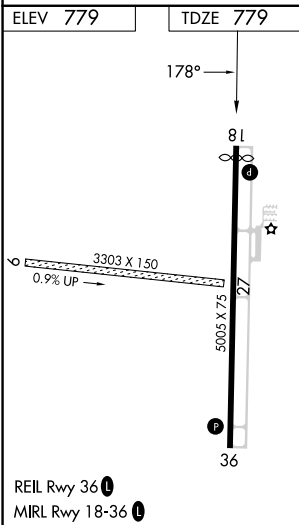
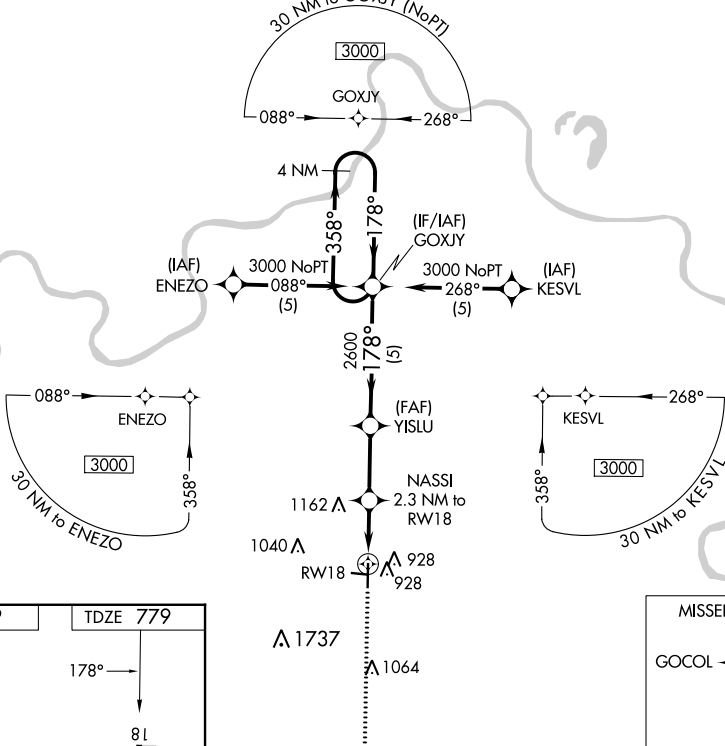
AWOS-3PT  
**118.675**

WHITEMAN APP CON \*  
**127.45**

UNICOM  
**122.8 (CTAF) 0**

NC-3, 26 DEC 2024 to 23 JAN 2025

NC-3, 26 DEC 2024 to 23 JAN 2025



|          |        |                             |                        |        |       |                      |
|----------|--------|-----------------------------|------------------------|--------|-------|----------------------|
| 3000     | GOCOL  | Visual Segment - Obstacles. | NASSI 2.3 NM to RWY 18 | YISLU  | GOXJY | 4 NM Holding Pattern |
|          |        |                             | 1.7 NM to RWY 18       | 1620   | 2600  | 358° → 3000          |
|          |        |                             | 0.6                    | 2.7 NM | 5 NM  |                      |
| CATEGORY | A      | B                           | C                      | D      |       |                      |
| INAV MDA | 1360-1 | 581 (600-1)                 |                        |        |       | NA                   |
| CIRCLING | 1360-1 | 581 (600-1)                 |                        |        |       | NA                   |