

APP CRS	Rwy Idg	3601
173°	TDZE	1798
	Apt Elev	1800

RNAV (GPS) RWY 18

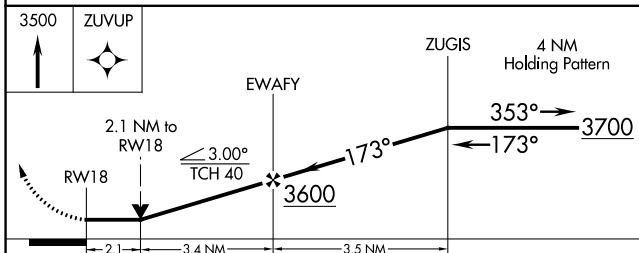
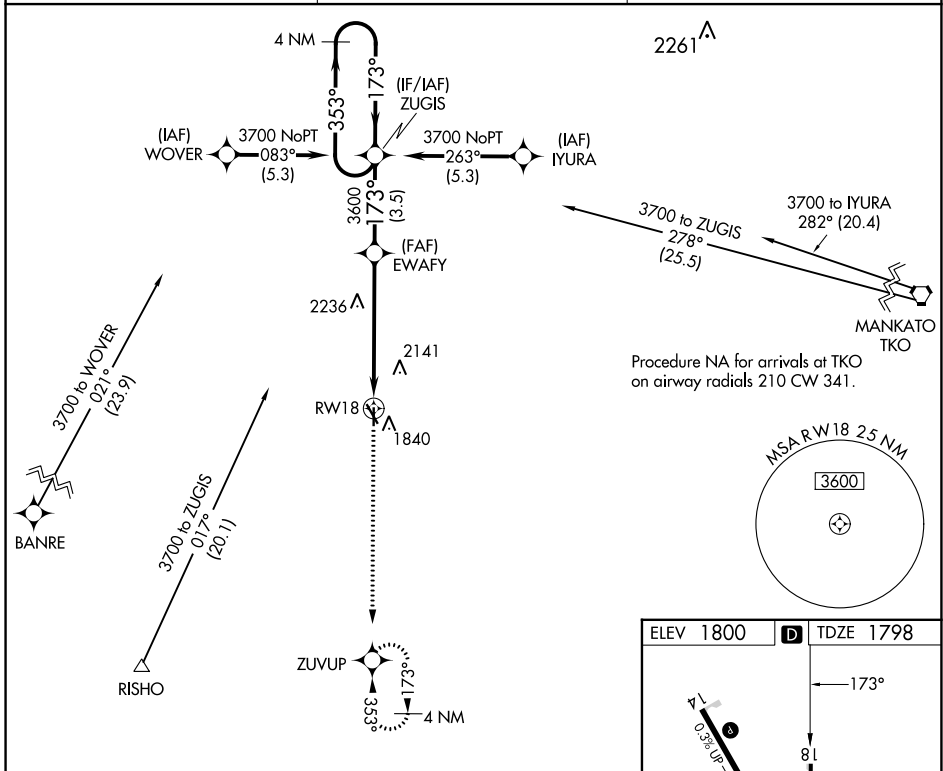
SMITH CENTER MUNI (K82)

RNP APCH.

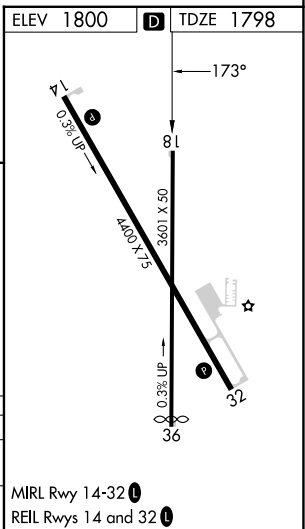
Circling to Rwy 36 NA at night. Rwy 18 helicopter visibility reduction below 3/4 SM NA. VDP NA when using Concordia altimeter setting. When local altimeter setting not received, use Concordia altimeter setting: increase all MDAs 180 feet and LNAV Cats A/B and Circling Cat A visibility 1/4 SM, and Circling Cat B visibility 1/2 SM.

MISSED APPROACH: Climb to 3500 direct ZUVUP and hold.

AWOS-3PT 118.45	MINNEAPOLIS CENTER 119.4 278.8	UNICOM 122.8 (CTAF) 1
---------------------------	--	---------------------------------



CATEGORY	A	B	C	D
LNAV MDA	2500-1	702 (700-1)	NA	NA
C CIRCLING	2500-1 700 (700-1)	2580-1 780 (800-1)	NA	NA



MIRL Rwy 14-32 1
REIL Rws 14 and 32 1

NC-2, 26 DEC 2024 to 23 JAN 2025

NC-2, 26 DEC 2024 to 23 JAN 2025