

APP CRS	Rwy Idg	3500
353°	TDZE	1798
	Apt Elev	1800

RNAV (GPS) RWY 36

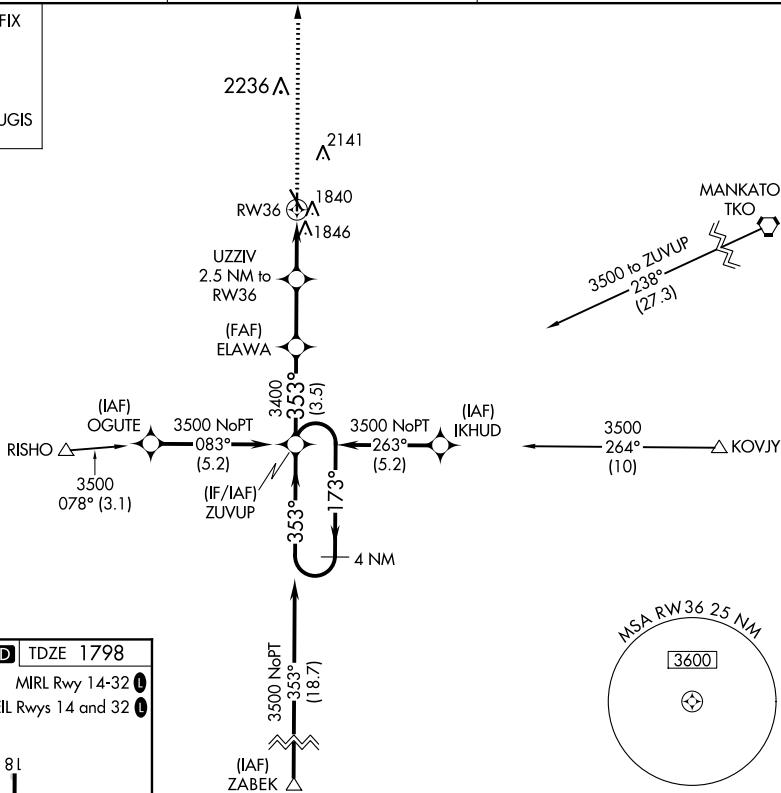
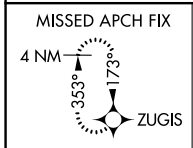
SMITH CENTER MUNI (K82)

RNP APCH.

Rwy 36 helicopter visibility reduction below 1 SM NA. When local altimeter setting not received, use Concordia altimeter setting: increase all MDAs 180 feet and Circling Cat B visibility 1/2 SM. Straight-in Rwy 36 NA at night, Circling Rwy 36 NA at night.

MISSED APPROACH: Climb to 3700 direct ZUGIS and hold.

AWOS-3PT 118.45	MINNEAPOLIS CENTER 119.4 278.8	UNICOM 122.8 (CTAF) 0
---------------------------	--	---------------------------------



ELEV 1800 **D** TDZE 1798

MIRL Rwy 14-32 **1**

REIL Rws 14 and 32 **1**

0.3% UP

4400 X 75

3600 X 50

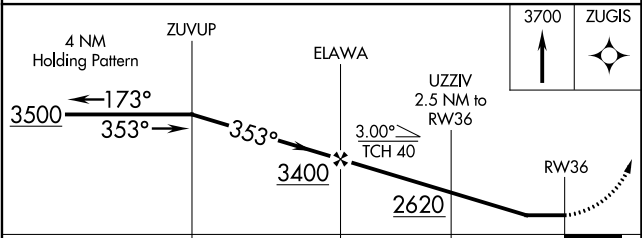
32

36

0.3% UP

353°

CATEGORY	A	B	C	D
LNNAV MDA	2100-1	302 (300-1)		NA
C CIRCLING	2300-1 500 (500-1)	2580-1 780 (800-1)		NA



CATEGORY	A	B	C	D
LNNAV MDA	2100-1	302 (300-1)		NA
C CIRCLING	2300-1 500 (500-1)	2580-1 780 (800-1)		NA

NC-2, 26 DEC 2024 to 23 JAN 2025

NC-2, 26 DEC 2024 to 23 JAN 2025