

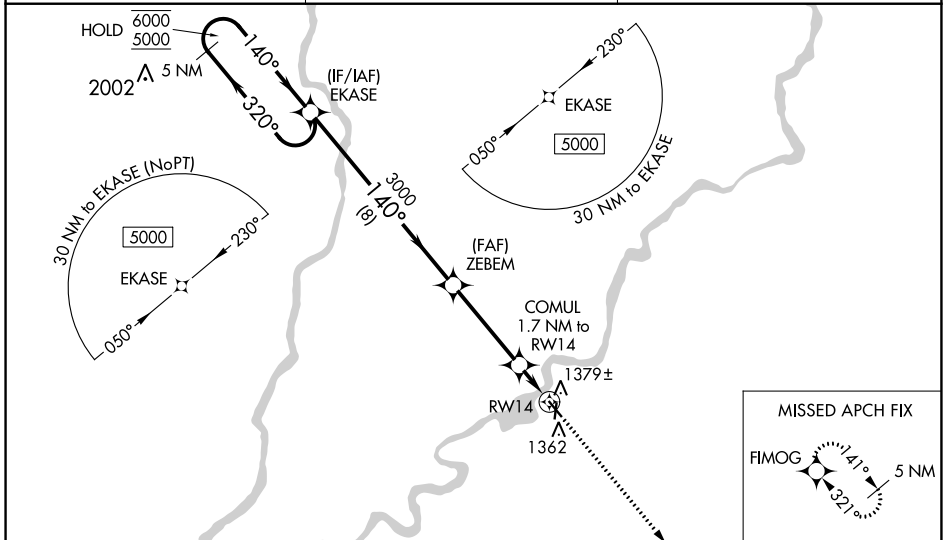
WAAS CH <b>77921</b> <b>W14A</b>	APP CRS <b>140°</b>	Rwy Idg TDZE Apt Elev	<b>4001</b> <b>1237</b> <b>1240</b>
--	------------------------	-----------------------------	---

# RNAV (GPS) RWY 14

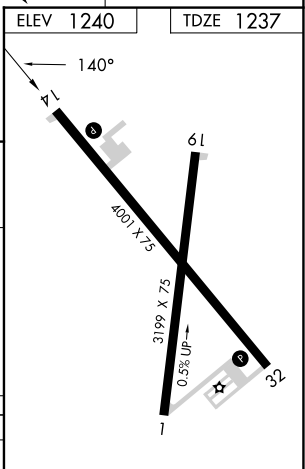
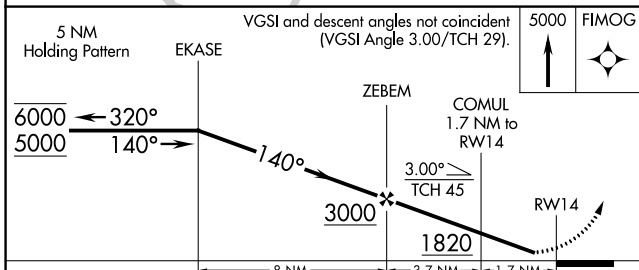
RUSK COUNTY (RCX)

RNP APCH.	<p><b>⚠</b> Rwy 14 helicopter visibility reduction below 1 SM NA. Straight-in Rwy 14 NA at night, Circling Rwy 1, 14, 19 NA at night. When local altimeter setting not received, use Rice Lake altimeter setting and increase all MDAs 100 feet.</p>	<p>MISSED APPROACH: Climb to 5000 direct FIMOG and hold, continue climb-in-hold to 5000.</p>

AWOS-3 <b>118.125</b>	MINNEAPOLIS CENTER <b>133.65 281.5</b>	UNICOM <b>122.8 (CTAF) 0</b>
--------------------------	---	---------------------------------



ELEV 1240	TDZE 1237
-----------	-----------



CATEGORY	A	B	C	D
LNNAV MDA	1640-1	403 (400-1)		NA
CIRCLING	1680-1 440 (500-1)	1700-1 460 (500-1)		NA

REIL Rws 14 and 32 0

MIRL Rws 14-32 and 1-19 0

EC-3, 26 DEC 2024 to 23 JAN 2025

EC-3, 26 DEC 2024 to 23 JAN 2025