

WAAS CH <b>57927</b> <b>W12A</b>	APP CRS <b>118°</b>	Rwy Idg TDZE Apt Elev	<b>4268</b> <b>2609</b> <b>2615</b>
--	------------------------	-----------------------------	---

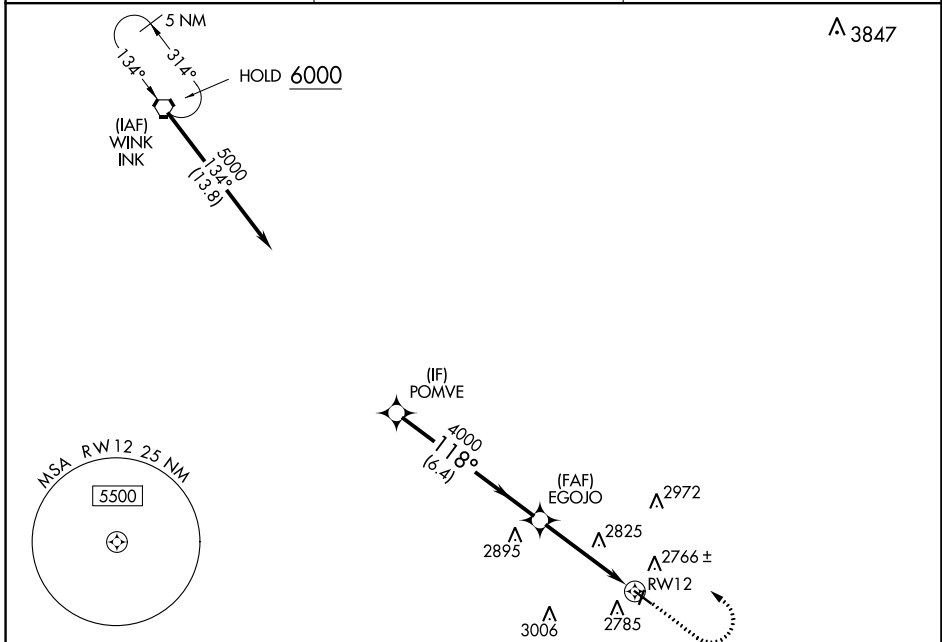
# RNAV (GPS) RWY 12

ROY HURD MEML (E01)

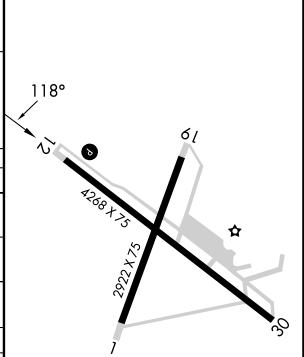
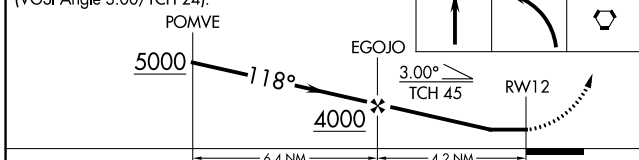
**⚠** DME/DME RNP-0.30 NA. Obtain local altimeter setting on CTAF; when not received, use Wink altimeter setting. Night landing: Rwy 12 NA. Helicopter visibility reduction below 1 SM NA.

**⚠ NA** MISSED APPROACH: Climb to 3200 then climbing left turn to 6000 direct INK VORTAC and hold.

AWOS-3PT <b>118.225</b>	FORT WORTH CENTER <b>133.1 298.95</b>	UNICOM <b>122.8 (CTAF) 0</b>
----------------------------	--	---------------------------------



VGSI and descent angles not coincident (VGSI Angle 3.00/TCH 24).	3200	6000	INK	ELEV 2615	TDZE 2609
--	------	------	-----	-----------	-----------



CATEGORY	A	B	C	D
LP MDA	3100-1	491 (500-1)	3100-1 $\frac{3}{8}$ 491 (500-1 $\frac{3}{8}$ )	NA
LNAV MDA	3120-1	511 (600-1)	3120-1 $\frac{3}{8}$ 511 (600-1 $\frac{3}{8}$ )	NA
CIRCLING	3280-1	665 (700-1)	3280-1 $\frac{3}{4}$ 665 (700-1 $\frac{3}{4}$ )	NA
WINK ALTIMETER SETTING MINIMUMS				
LP MDA	3180-1	571 (600-1)	3180-1 $\frac{5}{8}$ 571 (600-1 $\frac{5}{8}$ )	NA
LNAV MDA	3200-1	591 (600-1)	3200-1 $\frac{3}{4}$ 591 (600-1 $\frac{3}{4}$ )	NA
CIRCLING	3360-1	745 (800-1)	3360-2 $\frac{1}{4}$ 745 (800-2 $\frac{1}{4}$ )	NA

MIRL Rwy 1-19 and 12-30 0

SC-3, 26 DEC 2024 to 23 JAN 2025

SC-3, 26 DEC 2024 to 23 JAN 2025