

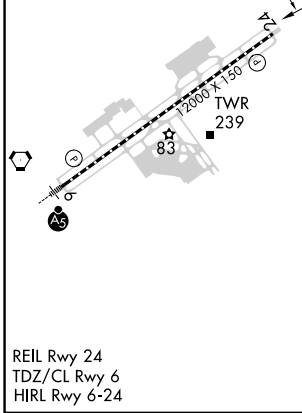
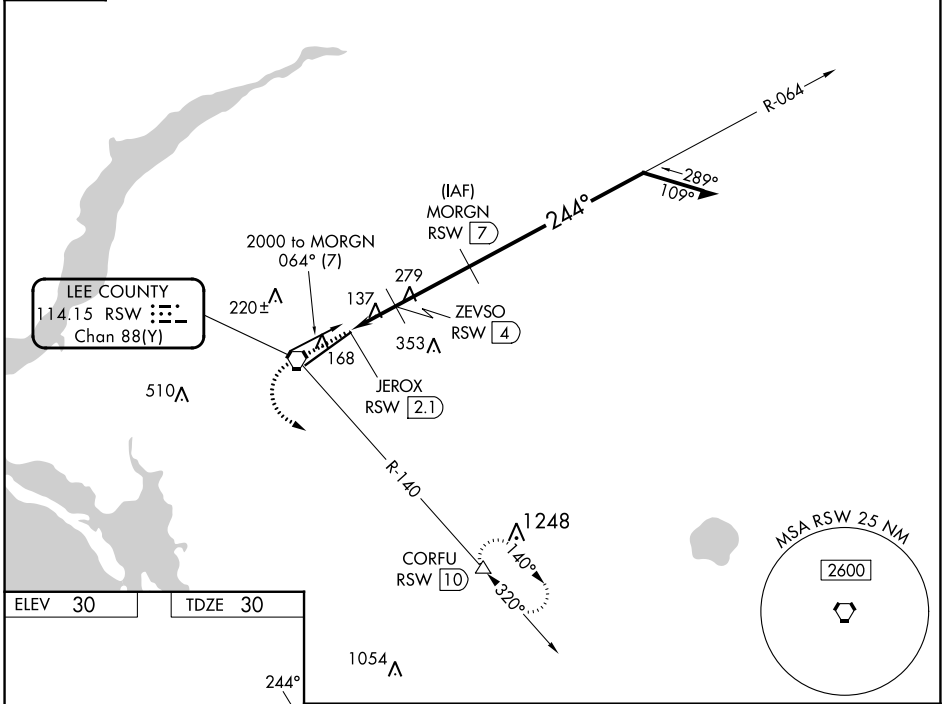
VORTAC RSW 114.15 Chan 88(Y)	APP CRS 244°	Rwy Idg TDZE Apt Elev	12000 30 30
--	------------------------	-----------------------------	--

VOR or TACAN RWY 24

SOUTHWEST FLORIDA INTL (RSW)

DME required.		MISSED APPROACH: Climb to 1000 then climbing left turn to 2300 on RSW VORTAC R-140 to CORFU/RSW 10 DME and hold.			
▼ Rwy 24 helicopter visibility reduction below ¾ SM NA.					
D-ATIS 124.65	FORT MYERS APP CON ★ 125.15 306.2 (RWY 6) 126.8 306.2 (RWY 24)	FORT MYERS TOWER ★ 128.75 (CTAF) 0 257.8	GND CON 121.9 257.8	CLNC DEL 132.075	UNICOM 122.95

CPDLC



ELEV 30	TDZE 30	1000	2300	RSW R-140	CORFU	VGSIs and descent angles not coincident (VGSIs Angle 3.00/TCH 72). Remain within 10 NM															
REIL Rwy 24	TDZ/CL Rwy 6	HIRL Rwy 6-24	<table border="1"> <tr> <th>CATEGORY</th> <th>A</th> <th>B</th> <th>C</th> <th>D</th> </tr> <tr> <td>S-24</td> <td colspan="2">400-1</td> <td colspan="2">370 (400-1)</td> </tr> <tr> <td>CIRCLING</td> <td>560-1</td> <td>530 (600-1)</td> <td>580-1½ 550 (600-1½)</td> <td>660-2 630 (700-2)</td> </tr> </table>				CATEGORY	A	B	C	D	S-24	400-1		370 (400-1)		CIRCLING	560-1	530 (600-1)	580-1½ 550 (600-1½)	660-2 630 (700-2)
CATEGORY	A	B	C	D																	
S-24	400-1		370 (400-1)																		
CIRCLING	560-1	530 (600-1)	580-1½ 550 (600-1½)	660-2 630 (700-2)																	

SE-3, 26 DEC 2024 to 23 JAN 2025

SE-3, 26 DEC 2024 to 23 JAN 2025