

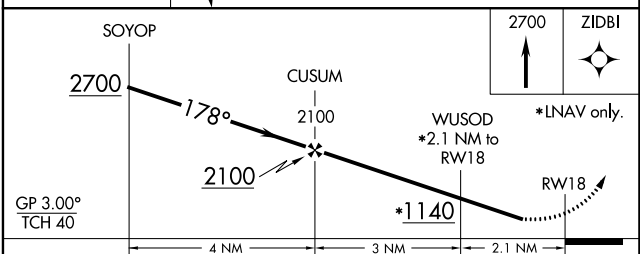
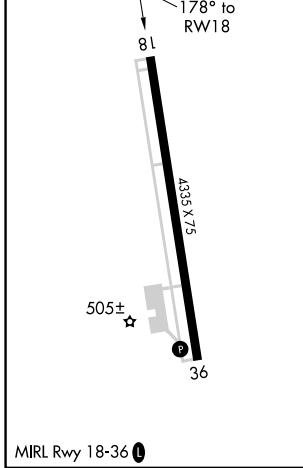
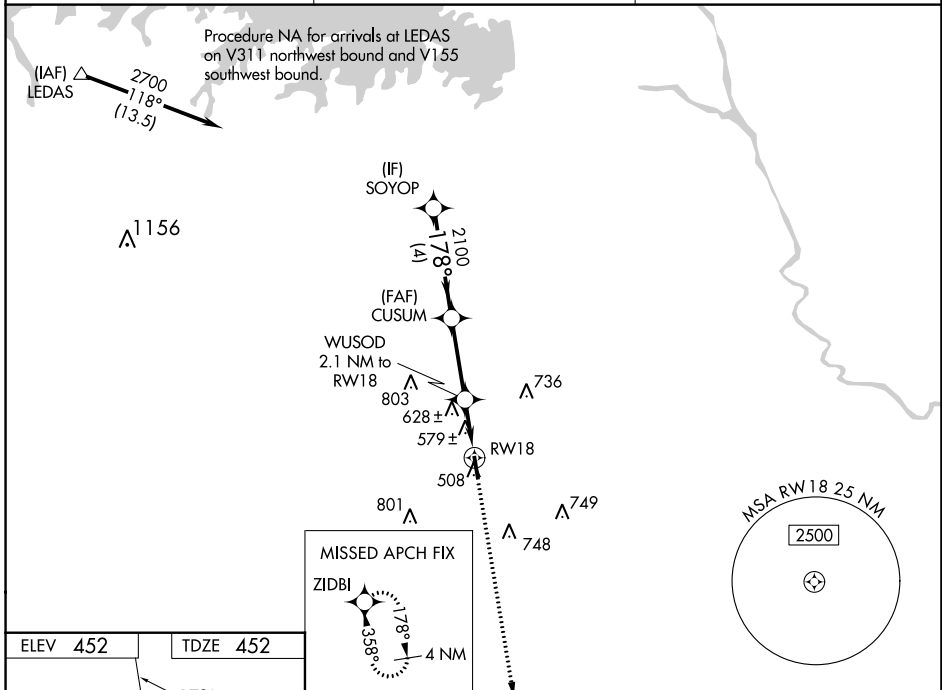
WAAS CH 82526 W18A	APP CRS 178°	Rwy Idg TDZE 452 Apt Elev 452
--	------------------------	---

RNAV (GPS) RWY 18

LEXINGTON COUNTY (6J0)

RNP APCH.	Baro-VNAV NA. Rwy 18 helicopter visibility reduction below 3/4 SM NA. Use Columbia Metro altimeter setting; when not received use Jim Hamilton L B Owens altimeter setting and increase all DA 19 feet, all MDA 20 feet and increase LPV and LNAV/VNAV all Cats visibility 1/8 mile.	MISSED APPROACH: Climb to 2700 direct ZIDBI and hold.
-----------	--	--

CAE ASOS 120.15	COLUMBIA APP CON 124.15 338.2	UNICOM 123.0 (CTAF) 0
---------------------------	---	---------------------------------



CATEGORY	A	B	C	D
LPV DA	757-1	305 (400-1)		NA
LNAV/VNAV DA	797-1 1/8	345 (400-1 1/8)		NA
LNAV MDA	940-1	488 (500-1)		NA
CIRCLING	980-1 528 (600-1)	1060-1 608 (700-1)		NA

SE-2, 26 DEC 2024 to 23 JAN 2025

SE-2, 26 DEC 2024 to 23 JAN 2025