

APP CRS **004°**  
 Rwy Idg **3599**  
 TDZE **620**  
 Apt Elev **629**

# RNAV (GPS) RWY 36

HARTSELLE/MORGAN COUNTY RGNL (5M $\emptyset$ )

**RNP APCH.**

**Procedure NA at night. Rwy 36 helicopter visibility reduction below 1 SM NA.**

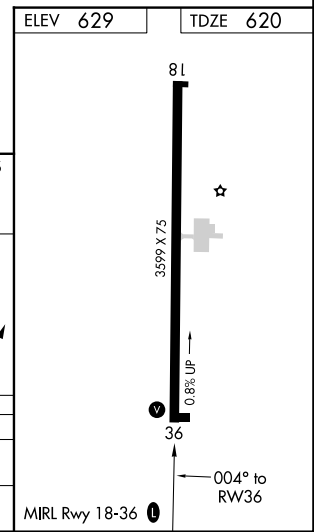
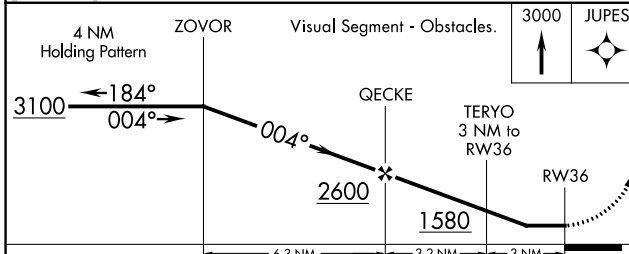
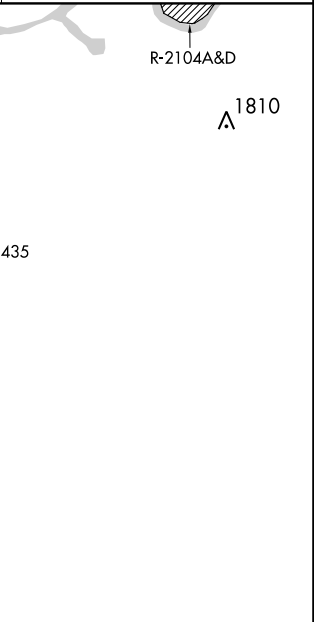
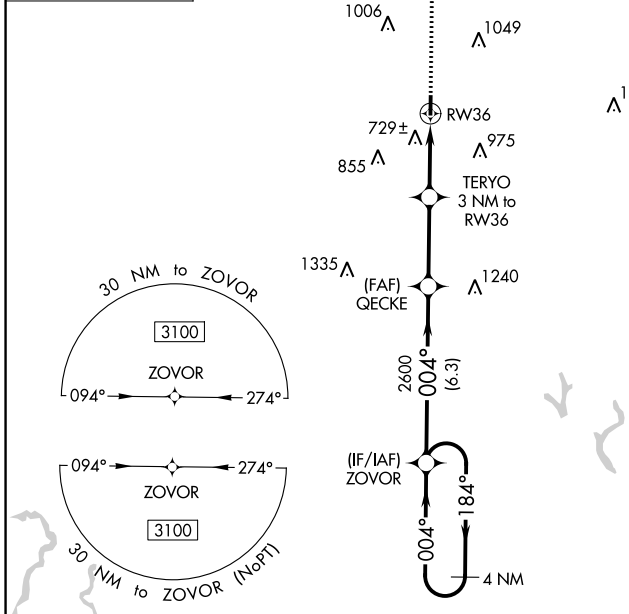
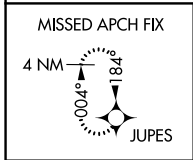
**Use Huntsville Intl-Carl T Jones Fld altimeter setting; when not received, use Cullman altimeter setting and increase all MDA 40 feet.**

**MISSED APPROACH: Climb to 3000 direct JUPES and hold.**

HSV ATIS  
**121.25**

HUNTSVILLE APP CON\*  
**118.05 239.0**

UNICOM  
**122.8 (CTAF)**



CATEGORY	A	B	C	D
LNVA MDA	1020-1	400 (400-1)	1020-1 $\frac{1}{8}$ 400 (400-1 $\frac{1}{8}$ )	NA
<b>C</b> CIRCLING	1120-1 491 (500-1)	1260-1 631 (700-1)	1520-2 $\frac{3}{4}$ 891 (900-2 $\frac{3}{4}$ )	NA

SE-4, 26 DEC 2024 to 23 JAN 2025

SE-4, 26 DEC 2024 to 23 JAN 2025