

WAAS CH 90514 W27A	APP CRS 266°	Rwy Idg TDZE Apt Elev	5002 4053 4053
--	------------------------	-----------------------------	---

RNAV (GPS) RWY 27

JEROME COUNTY (JER)

RNP APCH - GPS.

▼ Procedure NA at night. Circling NA north of Rwy 9-27.
▲ Rwy 27 helicopter visibility reduction below 1 SM NA.

MISSED APPROACH: Climb to 6500 direct LAHEW and hold.

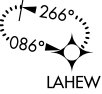
ASOS
135.225

TWIN FALLS APP CON *
126.7 353.75

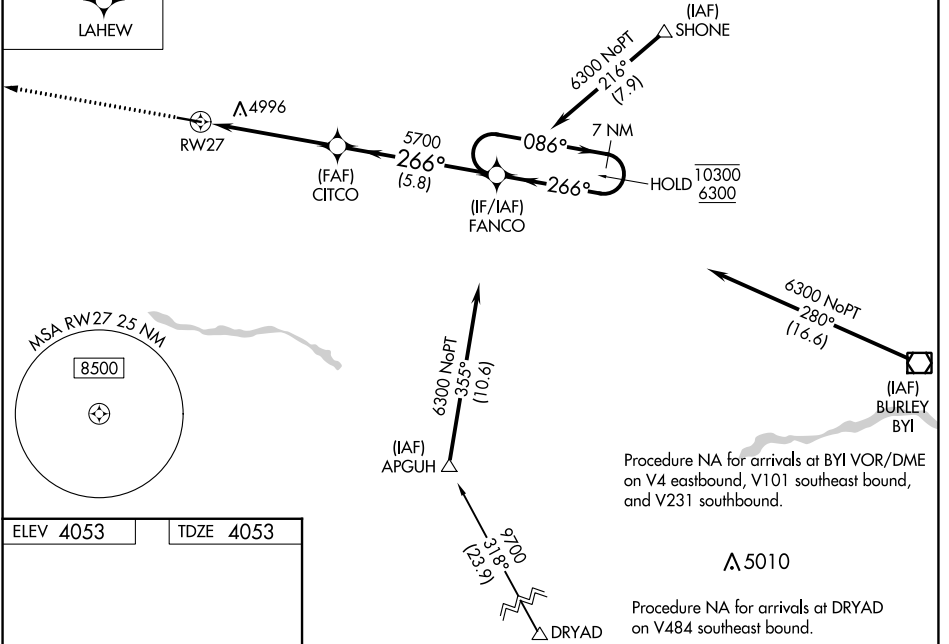
UNICOM
122.8 (CTAF) 0

MISSED APCH FIX

7 NM



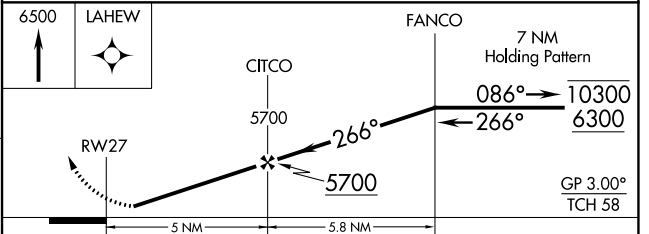
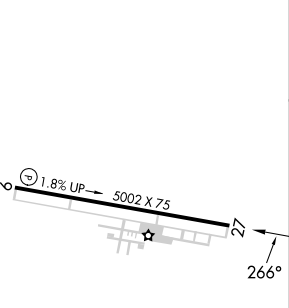
LAHEW



NW-1, 26 DEC 2024 to 23 JAN 2025

NW-1, 26 DEC 2024 to 23 JAN 2025

ELEV 4053 TDZE 4053



CATEGORY	A	B	C	D
LPV DA	4403-1 350 (400-1)			
LNAV MDA	5300-1¼ 1247 (1300-1¼)	5300-1½ 1247 (1300-1½)	5300-3	1247 (1300-3)
☑ CIRCLING	5300-1¼ 1247 (1300-1¼)	5300-1½ 1247 (1300-1½)	5300-3	1247 (1300-3)