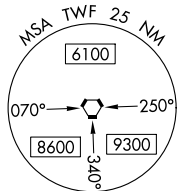
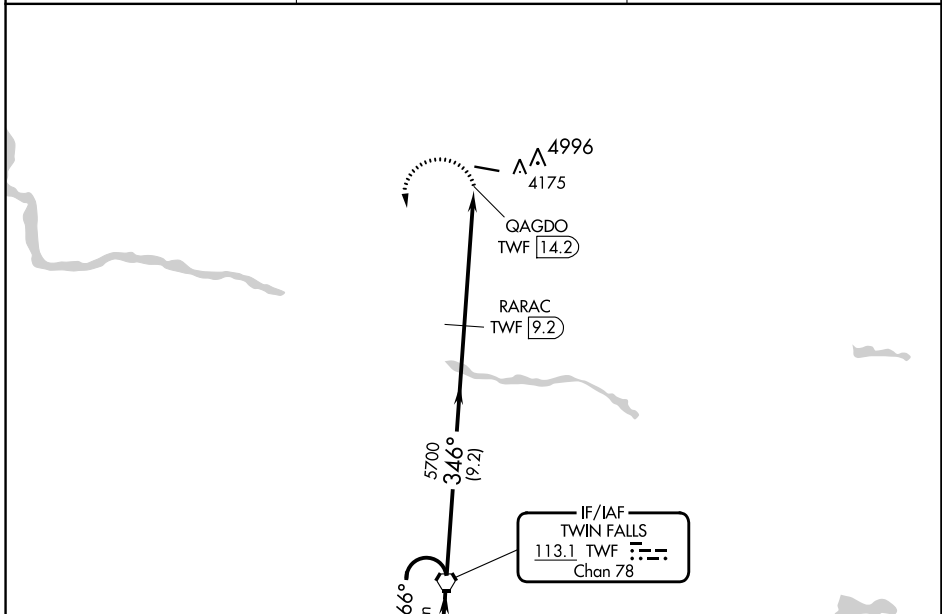


VORTAC TWF 113.1 Chan 78	APP CRS 346°	Rwy Idg TDZE Apt Elev	N/A N/A 4053
--	------------------------	-----------------------------	---

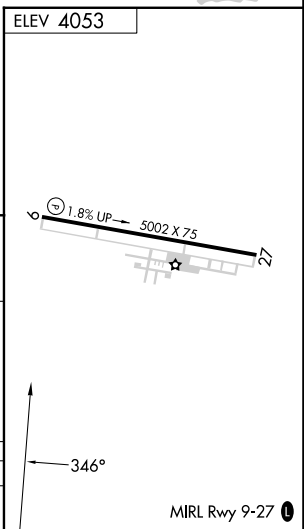
VOR-A
JEROME COUNTY (JER)

DME required.	MISSED APPROACH: Climbing left turn to 8000 direct TWF VORTAC and hold, continue climb-in-hold to 8000.
▽ ▲ Circling NA north of Rwy 9-27.	

ASOS 135,225	TWIN FALLS APP CON* 126.7 353.75	UNICOM 122.8 (CTAF) 0
------------------------	--	---------------------------------



NoPT for arrival on TWF VORTAC airway radials 097 CW 191.



One Minute Holding Pattern	TWF VORTAC	RARAC TWF 9.2	QAGDO TWF 14.2
17500	8000	5700	
← 166°	← 346°	← 346°	
9.2 NM		5 NM	
CATEGORY	A	B	C
◻ CIRCLING	4540-1 487 (500-1)	4580-1 527 (600-1)	4580-1½ 527 (600-1½)
			D
			4620-2 567 (600-2)

NW-1, 26 DEC 2024 to 23 JAN 2025

NW-1, 26 DEC 2024 to 23 JAN 2025