

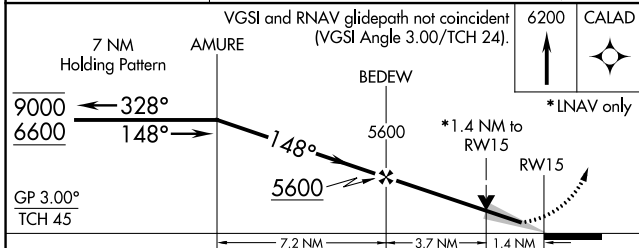
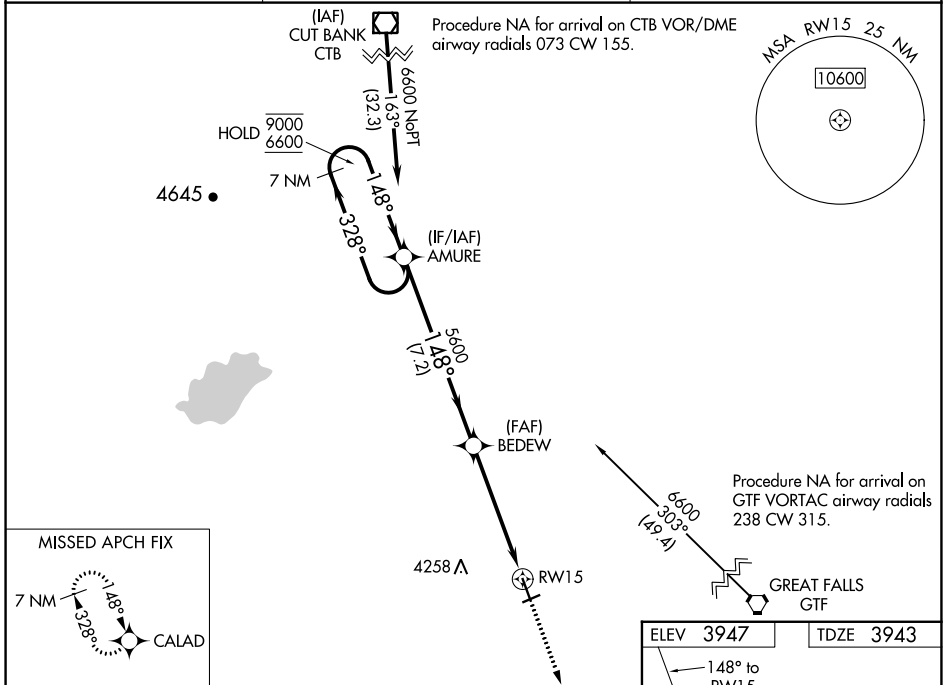
WAAS CH 70443 W15A	APP CRS 148°	Rwy Idg TDZE Apt Elev	5000 3943 3947
---------------------------------	------------------------	-----------------------------	---

RNAV (GPS) RWY 15

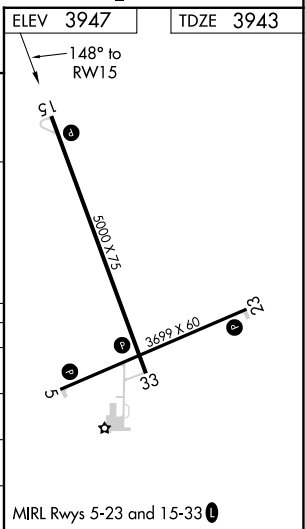
CHOTEAU (CII)

RNP APCH. ▼ NA For uncompensated Baro-VNAV systems, LNAV/VNAV ▲ NA NA below -22° C or above 54° C.	MISSED APPROACH: Climb to 6200 direct CALAD and hold.
--	---

AWOS-2 119.275	SALT LAKE CITY CENTER 133.4 285.4	UNICOM 122.8 (CTAF) 0
--------------------------	---	---------------------------------



CATEGORY	A	B	C	D
IPV DA		4143-1	200 (200-1)	
LNAV/VNAV DA		4193-1	250 (300-1)	
LNAV MDA	4420-1	477 (500-1)	4420-1 $\frac{3}{8}$	477 (500-1 $\frac{3}{8}$)
CIRCLING	4440-1	493 (500-1)	4600-1 $\frac{3}{4}$ 653 (700-1 $\frac{3}{4}$)	4900-3 953 (1000-3)



NW-1, 26 DEC 2024 to 23 JAN 2025

NW-1, 26 DEC 2024 to 23 JAN 2025